



BAY OF QUINTE REGION DEMOGRAPHIC REPORT



BAY OF QUINTE
ECONOMIC DEVELOPMENT

TABLE OF CONTENTS

COMPANY OVERVIEW

Table of Contents	
INTRODUCTION to The Bay of Quinte	3
Community Profile: Snapshot	5
The Top 5 Competitive Advantages of The Bay of Quinte region	5
Population: the region's two cities and greater rural areas	5
Human Resources	6
Transportation & Logistics	6
Industries	6
Labour: A Skilled, Dedicated Workforce	7
Workforce Participation	7
Education, Age and Skill Levels in The Bay of Quinte	7
Wage Information	8
Labour costs in the Bay of Quinte is affordable	10
Yearly Incomes:	10
Quality of Life	12
Housing	13
Location:	14
Driving Distances:	14
Transportation Network	15
Business Expenses In The Bay Of Quinte	16
Utility Infrastructure	16
Workforce Training: Colleges and Corporate Training	17
Universities	19
Appendix	
APPENDIX A: Detailed List of the Bay of Quinte's Communities	23
APPENDIX B: 2021 Statistics Demographic Data (Family Characteristics)	24
APPENDIX C: 2021 Statistics Canada Demographic Data (Labour)	25
APPENDIX D: 2021 Statistics Canada Demographic Data (Education)	26
APPENDIX E: 2021 Statistics Canada Demographic Data (Age and Gener at Birth Characteristics)	28
APPENDIX F: 2021 Statistics Canada Demographic Data (Language)	29
APPENDIX G: Guide to Basic Employer Costs in Ontario	32
APPENDIX H: Service Canada's Wage and Occupation Data	33
APPENDIX I: 2021 Statistics Canada Demographic Data (Household)	34
APPENDIX J: 2021 Statistics Canada Demographic Data - Population and Dwelling counts	35
APPENDIX K: Climate Data Comparison for the Bay Of Quinte	35
APPENDIX L: Sample Utility Rate Data for the Bay of Quinte	36
City of Belleville – Electricity Provider - Elexicon/Veridian Connections and Water/Waste Water Rates	36/37
City of Quinte West (Trenton) and Municipality of Brighton	37
City of Quinte West (Trenton) - Water and Wastewater	37
Electricity Provider – Hydro One	38
Municipality of Brighton – Water and Wastewater Data	39
Union Gas Rates–City of Belleville, City of Quinte West (Trenton), Municipality of Brighton	40
APPENDIX M: Sample Municipal Tax Rate Data	40
APPENDIX N: Loyalist College: Food Processing Operator Apprenticeship Training Program Modules	41



Introduction to The Bay of Quinte

A low-cost business environment and a top-ranked lifestyle = an ideal place to live, work and play.

Businesses looking to relocate to The Bay of Quinte enjoy a breadth of support, including multiple local economic development offices throughout the area. In particular, the Quinte Economic Development Commission (QEDC) helps you determine whether the region will suit your unique relocation requirements.

The Bay of Quinte Community Profile is a preliminary tool offering you a glimpse of the region. But QEDC's support to local businesses is unceasing: from helping you source custom workforce training to government incentives.

Use this document to see a snapshot of: the types of industries who already find The Bay of Quinte's infrastructure supportive and profitable. For example, The Bay of Quinte's available, educated and skilled manufacturing labour force is supported by a workforce development system. By linking education, manufacturing, economic and business development agencies, The Bay of Quinte keeps a labour force advantage and meets changing labour requirements.

Canada's Province of Ontario is one of the most cost-effective

locations in North America to run a business. And, The Bay of Quinte ranks among the best regions in Ontario for business. Besides lower start-up and operating costs (plus several incentive programs) the region is also a leader in human resource development.

To demonstrate the advantage The Bay of Quinte has over other regions, the costs of operating your business (key industry results from the 2016 KPMG Competitive Alternatives Study) are shown in the Appendices. The Appendices also offer sample billing from gas, electricity, waste and water, and property taxes. Labour costs and wage costs, location and education training programs available in the region are also itemized for you to paint a fuller picture of The Bay of Quinte.

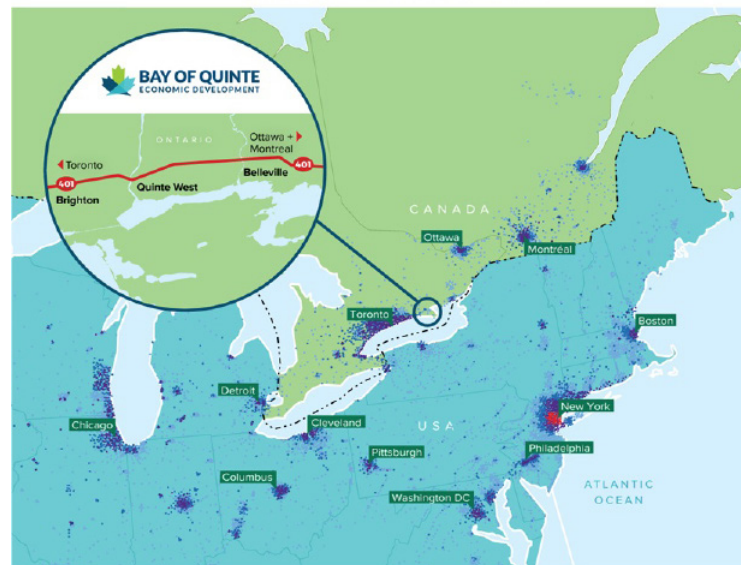
To get a complete perspective of all the region can offer you, please call Chris King, QEDC's Chief Executive Officer, or Business Development Officer, Vicki Bristow Ferguson, on 1-613-961-7990 or TF 1-866-961-7990.



REACH NORTH AMERICAN MARKETS FASTER FROM BAY OF QUINTE



Population Density Map



More than 47.5 million people live within 500 kilometres (310 miles) of The Bay of Quinte, and more than half of North America's industrial markets are within a day's truck run.

COMMUNITY PROFILE : A SNAP SHOT

The Top 5 Competitive Advantages of The Bay of Quinte region

1. A skilled workforce enjoys a superior quality of life creating a culture of dedicated employees to lessen your labour costs.

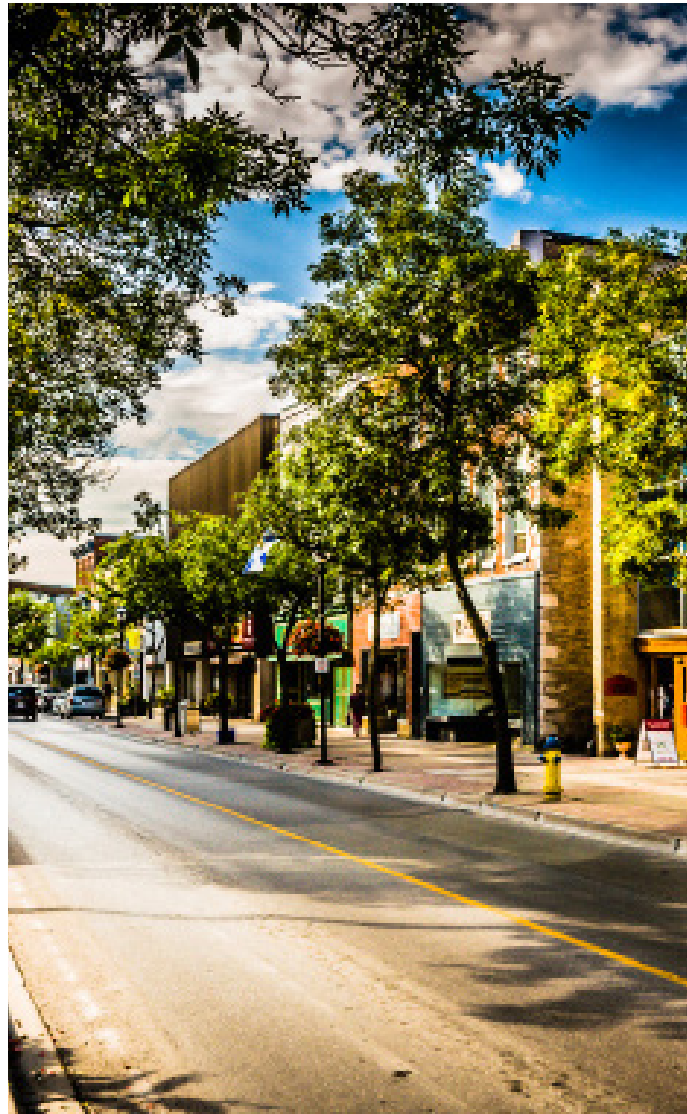
2. Location and transportation infrastructure make it easy to access broader North American markets.

3. Utility costs (waste, water, electricity, gas) and property taxes

are competitive, and government incentives help you invest in the region.

4. There are lower land costs in The Bay of Quinte.

5. The region offers continuous improvement of employee talent through Integrated Workforce Development.



POPULATION

The Bay of Quinte region has two major urban areas - the cities of Belleville and Quinte West (Trenton) - and a large rural base with many small communities including the Municipality of Brighton.

See appendix a for a more detailed list of the rural areas.

POPULATION 113,739

Belleville 55,071

Quinte West 46,560

Brighton 12,108



**Greater Bay of
Quinte Region
236,804**



COMMUNITY PROFILE

Industries

The Bay of Quinte's industrial base has over 350 companies including 120 manufacturers. A strong food-processing sector, comprised of 35 companies, employs 2200 people. The low cost, high-skilled labour force has experience and a culture of working in the food and beverage environment.

Surrounding this cluster of food processors are a full range of support services such as cold storage, warehousing, equipment fabrication and repair, transportation, product supply, customized training, co-packing and other support services.



Human Resources

- The Bay of Quinte's broader regional labour force is over 104,000.
- About 47.5 million people live within a five-hour drive of The Bay of Quinte.
- The area is well-known for its superb quality of life.
- The Bay of Quinte's well-trained, skilled, highly motivated workers are known to have a strong work ethic.
- Adding to the modest labour costs, turnover and absenteeism rates are low in the area.

Transportation & Logistics

- The Bay of Quinte region also offers unparalleled access to North American markets, proximity to transportation corridors and international border crossings.
 - o Ontario's most efficient highway, the 401, runs through The Bay of Quinte.
 - o The region is amply served by rail for passengers and cargo.
 - o Passenger and cargo air service is nearby.
- The ideal location offers a competitive advantage in costs. Fully-serviced industrial land is available, and there is a proactive approval process for development of new buildings.

LABOUR: A SKILLED, DEDICATED WORKFORCE

Noted for their strong, rural work ethic, the labour force has over 110,000 people within a 45-minute drive. The area’s workforce is business-oriented and less than 20% of the region is unionized.

The low turnover and minimal absenteeism further decreases the Bay of Quinte’s inexpensive labour costs. Wages are modest in comparison to the major metropolitan areas in Ontario, and Canada’s provincial averages.

However, education levels are close to provincial averages in the Bay of Quinte. Among the region’s 113,739 residents, more than 93,000 make on-the-job use of their mechanical, industrial, technical, computer or other skills. In November 2024 the unemployment rate was 4.9%, which means you can have your first choice of staff.

The region’s high quality of life attracts families. Spouses and dependents provide an excellent source of potential full and part-time labour. Canada’s largest Air Force Base (8 Wing CFB Trenton) is in Quinte West and helps to sustain the bilingual population (English and French-speaking). There is a large network of young, retired military personnel adding to the region’s high-skilled labour population.



2021 Statistics Canada Census Data: Marital Status

Characteristic	City of Belleville			City of Quinte West			Municipality of Brighton			Quinte Region*			Greater Quinte Region**		
	Total	Men	Women	Total	Men	Women	Total	Men	Women	Total	Men	Women	Total	Men	Women
Total - Marital status for the total population aged 15 years and over - 100% data	46,845	22,400	24,445	39,200	19,415	19,790	10,750	5,460	5,290	96,795	47,275	49,525	191,385	93,880	97,520
Married or living common-law	25,255	12,590	12,665	23,865	11,920	11,940	6,800	3,415	3,390	55,920	27,925	27,995	115,710	57,840	57,885
Married	19,605	9,760	9,840	18,920	9,455	9,465	5,615	2,820	2,795	44,140	22,035	22,100	92,350	46,175	46,170
Living common-law	5,655	2,830	2,825	4,945	2,470	2,475	1,190	590	595	11,790	5,890	5,895	23,370	11,655	11,700
Living common law - Never married	3,800	1,925	1,880	3,200	1,610	1,590	685	345	335	7,685	3,880	3,805	14,420	7,270	7,175
Living common law - Separated	370	185	190	375	185	185	75	40	35	820	410	410	1,670	855	835
Living common law - Divorced	1,300	660	645	1,220	615	605	360	175	180	2,880	1,450	1,430	6,335	3,170	3,170
Living common law - Widowed	175	60	115	150	55	95	75	35	40	400	150	250	915	385	530
Not married and not living common-law	21,590	9,815	11,780	15,340	7,495	7,850	3,945	2,045	1,900	40,875	19,355	21,530	75,660	36,050	39,630
Not married and not living common law - Never married	12,765	7,025	5,740	8,960	5,115	3,845	2,020	1,225	790	23,745	13,365	10,375	43,185	24,340	18,860
Not married and not living common law - Separated	1,635	685	950	1,220	550	670	310	175	135	3,165	1,410	1,755	5,820	2,750	3,075
Not married and not living common law - Divorced	3,505	1,315	2,195	2,585	1,165	1,425	675	310	365	6,765	2,790	3,985	12,545	5,525	7,025
Not married and not living common law - Widowed	3,685	790	2,895	2,570	660	1,905	945	340	605	7,200	1,750	5,405	14,110	3,440	10,675

*Quinte Region includes the communities of the City of Belleville, City of Quinte West and the Municipality of Brighton

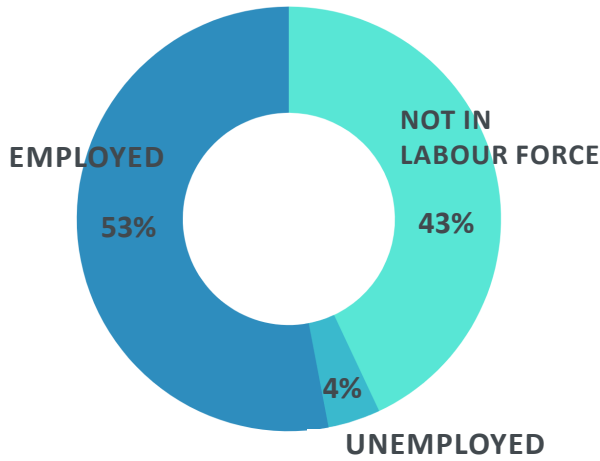
**Greater Quinte Region includes the communities of the City of Belleville, City of Quinte West, Municipality of Brighton, Hamilton Township, Cramoie Township, Allevick/Holdimand Township, Tyendinago Township, Strling Rowdon Township, Municipality of Centre Hastings, Town of Deseronto, Municipality of Tweed, Town of Bancroft, Carleton Place Township, Municipality of Centre Hastings, Municipality of Hastings Highlands, Limerick Township, Madoc Township, Municipality of Marmor and Lake, Tudor and Cashel Township, Wolfaton Township, Town of Greater Napanee, City of Prince Edward County.

Workforce Participation

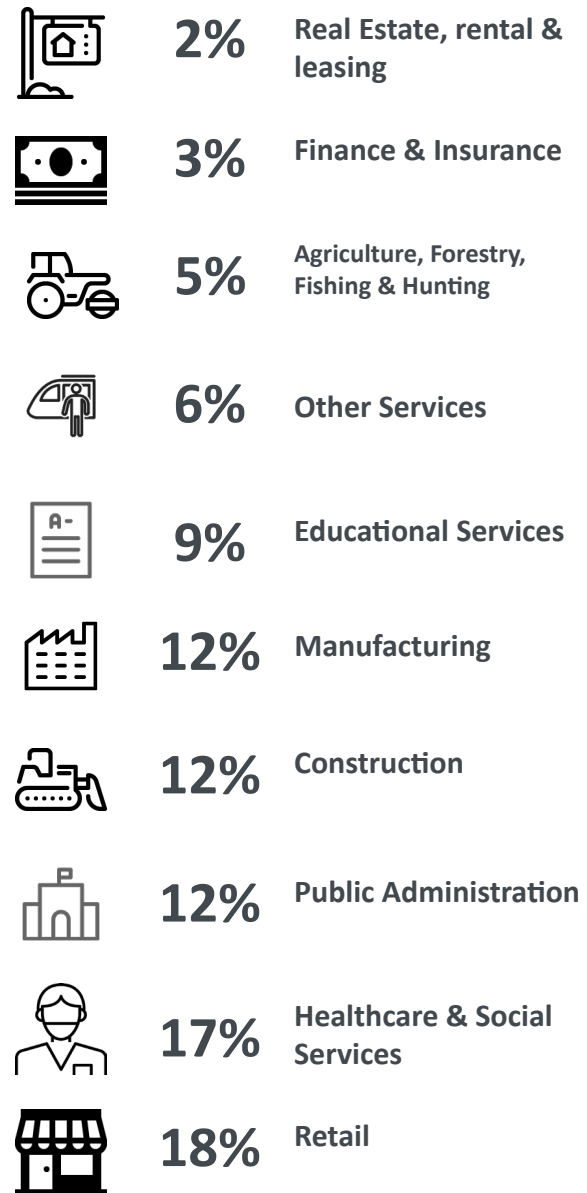
Overall, there is a diverse range of occupations undertaken by The Bay of Quinte labour force, demonstrating that there are enough people in the area to serve any company’s need. For a detailed breakdown on labour positions, see Appendix C for Statistics Canada Labour Demographic Data.

The charts below reflect Statistics Canada’s 2016 record of skilled Labour Force Participation in the Bay of Quinte.

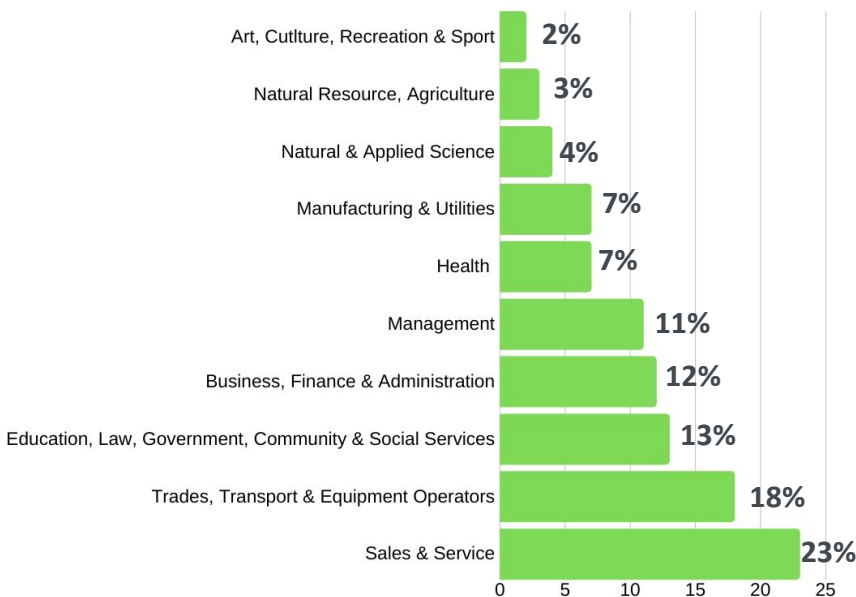
**Labour Force Activity
Greater Quinte
2016 Statistics Canada**



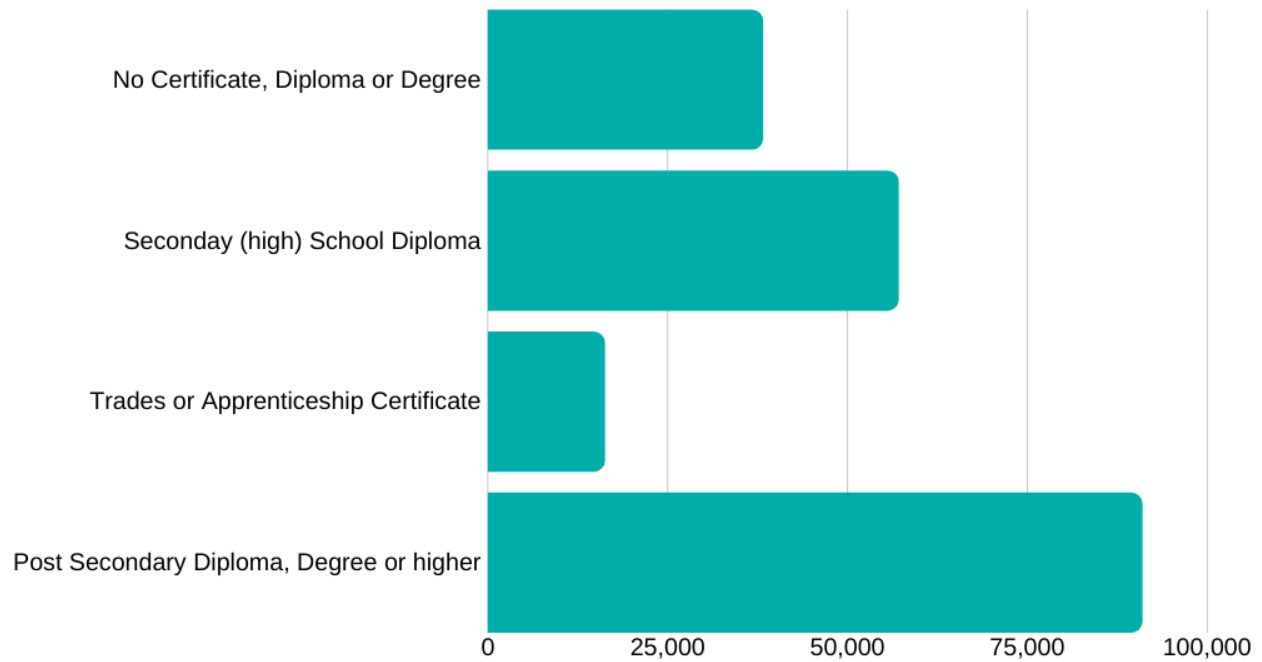
**Labour Force by Industry
Greater Quinte
2016 Statistics Canada**



**Labour Force by Occupation
Greater Quinte 2016 Statistics Canada**



HIGHEST CERTIFICATE; DIPLOMA OR DEGREE FOR THE POPULATION AGED 15 YEARS AND OVER IN PRIVATE HOUSEHOLDS - 25% SAMPLE DATA, GREATER BAY OF QUINTE

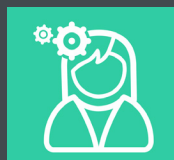


CLASS OF WORKER



EMPLOYEE

86%



SELF EMPLOYED

13%

OTHER 2%





Languages

The dominant language in the Bay of Quinte is English. A large number of people are fluent, or competent, in French. Please see Appendix F (Language).

Wage Information

The greater Bay of Quinte region is home to a highly motivated labour force of 104,775 men and women with a wide range of up-to-date mechanical, industrial, computer and other skills.

The highly skilled labour force comes at a reasonable cost. Average wages in the area are lower than in larger, urban centres and the provincial average. (For more information on labour costs in Canada, see

Appendix G “Basic Costs for Ontario Employers.”)

Canada offers the second lowest manufacturing wages in the G-7. Wages in the Bay of Quinte are among Canada’s most competitive rates: labour rates here start at \$17.20

Government assistance programs and Service Canada provide employee training and wage support to qualified individuals.

8 Wing / CFB Trenton

With Canada’s major air force base in Trenton, aerospace manufacturing in The Bay of Quinte keeps you close to the end user and helpful liaisons. Set up adjacent to the military in an investment-ready industrial park. Make use of the multiple logistics companies in the area to access more of North America. The region has a bilingual French-speaking population due largely to the Canadian Air Forces Base located here. 8 Wing, CFB Trenton employs approximately 3,200 military and 900 civilian workers. The spouses and dependents provide an excellent source of potential full and part-time labour. Young retired military personnel are an excellent source of skilled labour.

Trenton’s air force base is expanding and investing in new infrastructure. The base is looking for private sector partners to help with everything from new hangers to the most advanced aviation and defence technology. So it’s a good time to be in The Bay of Quinte if your company offers:

- Aircraft Engines, Aircraft Parts and Aircraft
- Avionics and Electronic Systems
- Simulation and Training
- Maintenance and Overhaul



LABOUR COSTS



2021 STATISTICS CANADA - CENSUS DATA - INCOME

2021 Statistics Canada Demographic Data: Income

	City of Belleville			City of Quinte West			Municipality of Brighton			Quinte Region*			Greater Quinte Region**		
	Total	Men	Women	Total	Men	Women	Total	Men	Women	Total	Men	Women	Total	Men	Women
INCOME OF INDIVIDUALS IN 2020															
Total - Income statistics in 2020 for the population aged 15 years and over in private households - 100% data	45,570	21,910	23,670	38,625	19,110	19,505	10,133	4,935	5,200	34,230	15,965	18,275	186,775	91,745	95,030
Number of total income recipients aged 15 years and over in private households in 2020 - 100% data	44,070	21,300	22,765	37,340	18,500	18,840	9,885	4,825	5,060	31,295	14,425	16,870	181,195	88,900	92,295
Median total income in 2020 among recipients (\$) <i>(1)</i>	\$38,800	\$42,400	\$36,000	\$40,800	\$48,800	\$34,400	\$39,600	\$48,000	\$32,800	\$39,600	\$48,000	\$34,400	\$37,200	\$42,000	\$32,800
Number of after-tax income recipients aged 15 years and over in private households in 2020 - 100% data	44,980	21,305	23,675	37,360	18,505	18,850	9,900	4,835	5,065	31,340	14,445	16,890	181,260	88,930	92,330
Median after-tax income in 2020 among recipients (\$) <i>(1)</i>	\$35,600	\$38,400	\$33,200	\$36,800	\$43,200	\$31,600	\$36,000	\$43,800	\$30,200	\$36,800	\$43,800	\$31,600	\$34,000	\$38,000	\$29,800
Number of market income recipients aged 15 years and over in private households in 2020 - 100% data	37,840	18,410	19,430	32,440	16,540	15,900	8,775	4,425	4,350	25,855	12,365	13,490	157,365	78,840	78,525
Median market income in 2020 among recipients (\$) <i>(1)</i>	\$32,400	\$36,800	\$27,000	\$35,200	\$45,000	\$25,800	\$31,200	\$40,400	\$23,200	\$32,400	\$40,400	\$25,800	\$31,300	\$38,400	\$24,800
Number of employment income recipients aged 15 years and over in private households in 2020 - 100% data	29,175	14,945	14,230	23,230	11,410	11,820	5,950	3,205	2,740	20,350	11,560	8,790	119,730	62,895	56,835
Median employment income in 2020 among recipients (\$) <i>(1)</i>	\$33,600	\$38,400	\$28,400	\$38,000	\$46,800	\$30,200	\$30,200	\$35,600	\$25,600	\$33,800	\$38,400	\$28,400	\$31,000	\$36,200	\$26,800
Number of government transfers recipients aged 15 years and over in private households in 2020 - 100% data	40,570	20,380	21,430	34,000	16,600	17,400	9,160	4,425	4,720	31,730	14,395	15,540	165,920	80,385	85,535
Median government transfers in 2020 among recipients (\$) <i>(1)</i>	\$12,000	\$9,600	\$13,300	\$16,700	\$8,700	\$12,400	\$13,200	\$12,600	\$13,500	\$12,900	\$9,600	\$13,300	\$12,700	\$11,650	\$13,300
Number of employment insurance benefits recipients aged 15 years and over in private households in 2020 - 100% data	3,630	1,605	2,025	3,300	1,405	1,890	755	340	405	7,885	3,350	4,530	15,455	7,165	8,290
Median employment insurance benefits in 2020 among recipients (\$) <i>(1)</i>	\$5,480	\$5,480	\$5,520	\$5,520	\$5,740	\$5,480	\$5,680	\$6,000	\$5,480	\$5,520	\$5,740	\$5,480	\$5,760	\$6,000	\$5,520
Number of COVID-19 emergency and recovery benefits recipients aged 15 years and over in private households in 2020 - 100% data	11,410	5,380	6,030	8,405	3,715	4,700	1,065	885	1,075	21,870	10,040	11,830	42,345	19,785	22,560
Median COVID-19 emergency and recovery benefits in 2020 among recipients (\$) <i>(1)</i>	\$8,000	\$8,000	\$8,000	\$8,000	\$8,000	\$8,000	\$8,000	\$8,000	\$8,000	\$8,000	\$8,000	\$8,000	\$8,000	\$8,000	\$8,000

*Quinte Region includes the communities of the City of Belleville, City of Quinte West and the Municipality of Brighton

**Greater Quinte Region includes the communities of the City of Belleville, City of Quinte West, Municipality of Brighton, Hamilton Township, Cranston Township, Alton/Walton Township, Tyndal/Tyng Township, Strick Township, Municipality of Carleton Place, Town of Deseronto, Municipality of Tweed, Town of Burroughs, Carleton Place Township, Rowley Township, Municipality of Hastings Highlands, Carleton Township, Madoc Township, Municipality of Matilda and Lake, Tudor and Carleton Township, Hallowell Township, Town of Greater Napanee, City of Prince Edward County.



Yearly Incomes:

In 2020, the yearly average earnings for workers across the Bay of Quinte was \$36 000 (CAD) per annum.



BAY OF QUINTE

Quality of Life

The Bay of Quinte lifestyle has few parallels, with top ranking for Quality of Life in Ontario. The relaxed atmosphere of a small city or town mixes with the first-class amenities of a much larger centre.

Only minutes from Waterfront, recreation options range from sunning or swimming at Lake Ontario's many beaches, to boating, walking, biking and skiing. 14 different golf courses welcome residents and tourists. There are year-round sports teams, a strong art and culture scene as well as a range of annual Community Events and Festivals.

The QEDC website describes the various lifestyle activities and offers you reliable links



Climate

The Bay of Quinte is in the fortunate position of being able to enjoy all four seasons. As a bay, the climate in the area is moderated, and sheltered from Lake Ontario's harsher conditions, reducing the severity of the summer and winter temperatures. The average daily maximum temperature in January is -2.8°C , while the average daily maximum temperature for July is 26.1°C .

For a complete list of annual temperatures, see Appendix K.

HOUSING

Housing is more than affordable in The Bay of Quinte. You'll find large, modern, family-style homes are priced much lower than Canada's metropolises. According to the Quinte and District Real Estate Board Inc., the annual 2023 Average Purchase Price of a residential home in the Quinte area was \$578,185 (CAD).

Most homes are owner-occupied, and have more than six rooms. Homes are well-maintained as shown by the low 'major repair' figures in the 2021 Canadian Census (see the rest of this report in Appendix I). Apartment buildings tend to have fewer than five stories, decreasing the likelihood of home owners feeling "boxed in" by taller residential buildings.

Appendix J offers detailed information regarding 2021 Population and Dwelling Counts in the Bay Of Quinte.





BAY OF QUINTE'S LOCATION

The Bay of Quinte is less than a day's drive to Canada's major market centres, and over 50% of all North American Industrial markets. The Bay of Quinte is strategically positioned off the Highway 401 (Ontario's most important highway, which travels through the heart of the region). The Highway 401 is the major transportation route for all of southern Ontario, offering ready access to major markets both within Canada and the United States.

Serviced and/or available industrial land is located adjacent to the Highway 401.

Understandably, The Bay of Quinte has become a major manufacturing centre, with over 350 industrial manufacturers (120 manufacturers, 350 industry related service providers -trucking, warehouse, etc.).

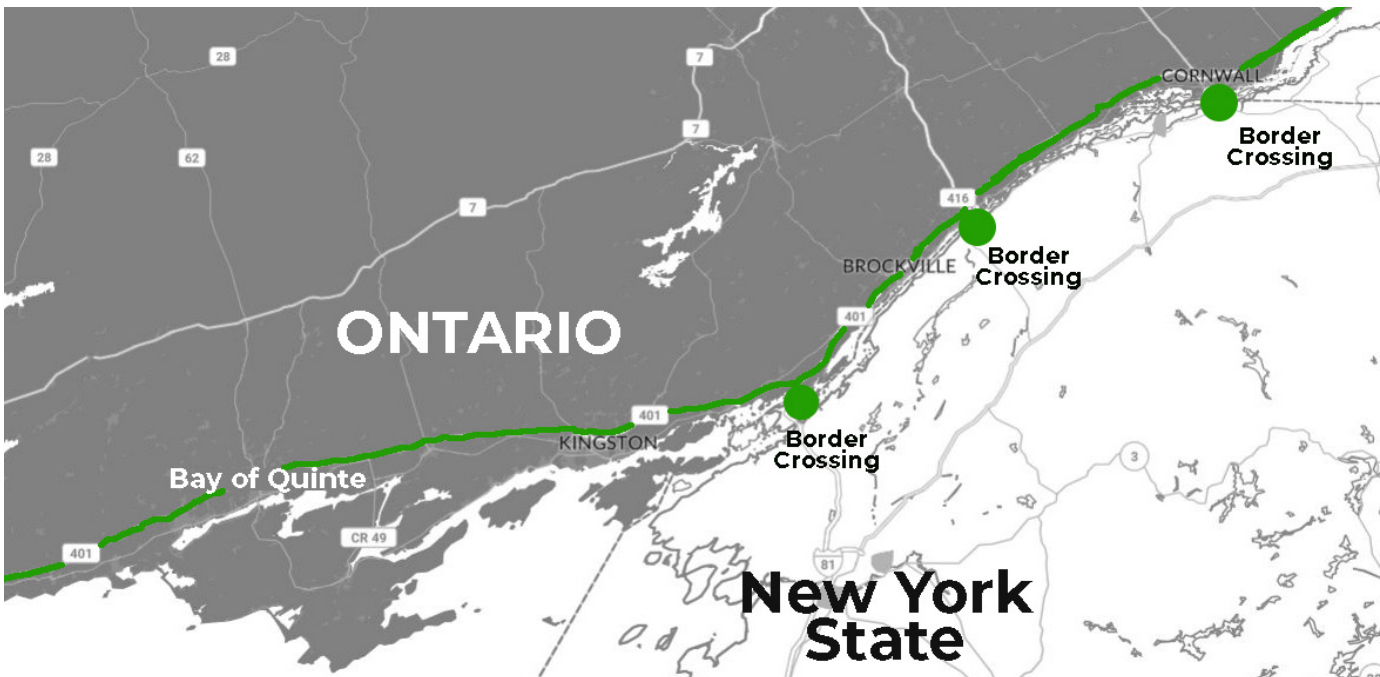
Driving Distances:

Because the Highway 401 offers a major transportation corridor between Toronto, Montreal and Ottawa, goods transportation is generally done along the four-lane divided, controlled access highway.

City	Kms	Miles	Hours
Kingston	75	46	0:45
Peterborough	100	62	1:20
Toronto	190	118	1:45
Ottawa	230	142	2:35
Montreal	360	223	3:50
Buffalo	324	201	4:20
Detroit	531	330	5:20
Philadelphia	711	442	7:10
New York	702	436	7:20
Chicago	992	616	10:00
Atlanta	1685	1047	17:10

Border Crossings	Kms	Miles	Hours
Alexandria Bay/Ivy Lea	120	75	1:10
Ogdensburg/Prescott	174	108	2:00
Massena/Cornwall	248	158	2:45
Lewiston/Queenstown	292	182	4:00
Niagara Falls	295	183	4:00
Buffalo/Fort Erie	320	199	4:15
Port Huron/Sarnia	445	176	5:20
Detroit/Windsor	524	325	5:20

It is just as easy to cross the United States border from The Bay of Quinte. Even better, certain goods may be eligible for the F.A.S.T. Border Crossing program (at the nearby Lansdowne Canada/U.S.A. border crossing) helping you eliminate wait times.



BAY OF QUINTE'S TRANSPORTATION NETWORK

Another great advantage of locating in The Bay of Quinte region is the excellent road, rail, and air transportation network.

Rail

The Bay of Quinte Region is a major rail terminus for Canada's two market-dominant railway companies, Canadian National (CN) and Canadian Pacific (CP), which run their main Toronto to Montreal freight lines through the area.

Both railways provide freight and express service (piggyback and container facilities available) to the region, including overnight express service to Toronto and Montreal as well as intermediate points. Rail sidings exist, or can be extended, to many of the development sites.



Air

The 8 Wing CFB Trenton (located in the Bay of Quinte's town of Trenton) is Canada's largest Air Base. It is available for commercial flights for passenger and cargo uses by prior arrangement with the Department of National Defence (DND). Toronto Pearson International Airport is approximately 1 ¾ hours drive west and provides regular domestic and international commercial, chartered and cargo flights to many US and overseas destinations. Also nearby are the International Airports of Ottawa and Montreal (MacDonald-Cartier Airport and Dorval and Pierre Elliot Trudeau Airports).

Domestic Airports like Kingston's Norman Rogers Airport is located approximately 50 minutes drive east of Belleville and provides regular commercial flights to and from Toronto Pearson International Airport, as well as servicing private, chartered and cargo aircraft flight services.



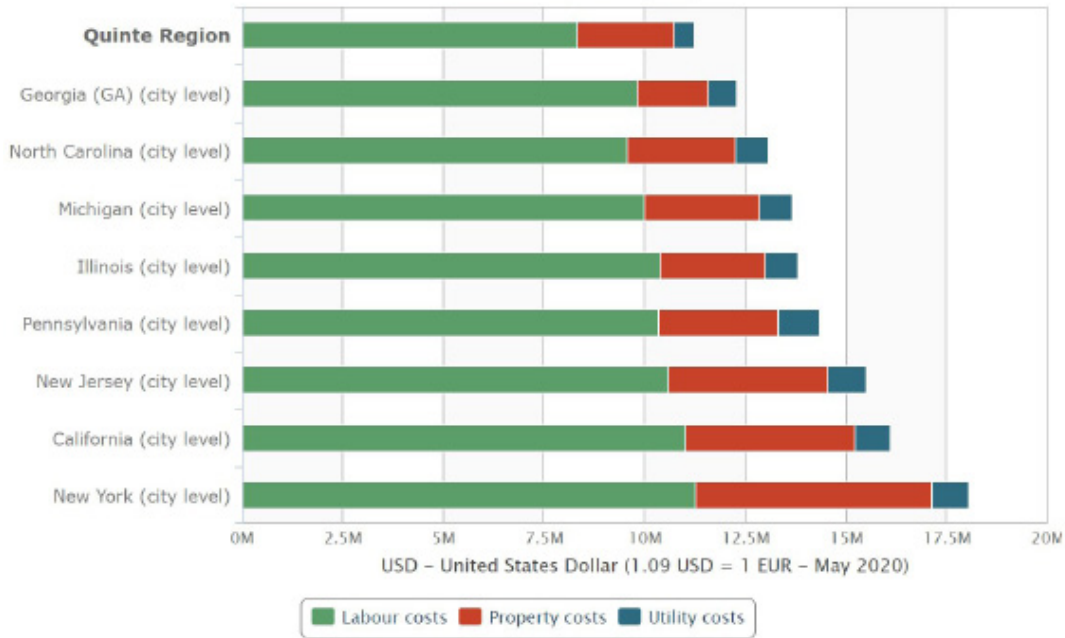
Ports

One of the largest inland ports in the world (located on the St. Lawrence River), the Port of Montreal, is located only 370 km (285 miles) from the Bay of Quinte. The Bay of Quinte has easy access to the Port of Montreal (Quebec, Canada) by road or rail. Quebec Highways 10/15/20/30/40 all link to Ontario's Highway 401. Railways serving the Port of Montreal include CN Intermodal Services and Canadian Pacific (CP), which like the Highway 401, run through the Bay of Quinte.

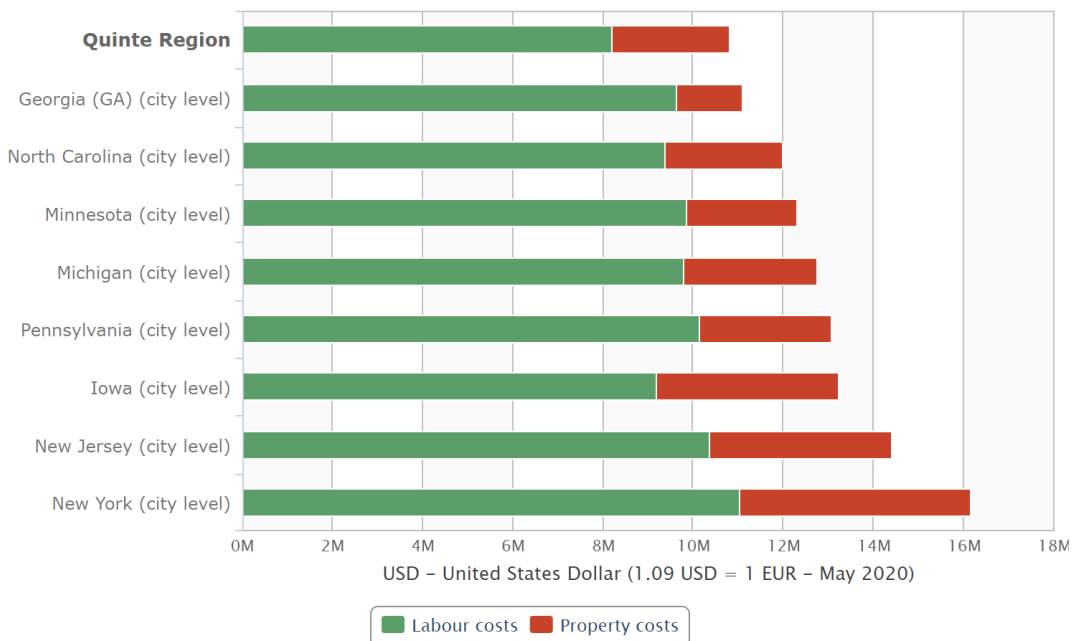
LOWER OPERATIONAL COSTS IN THE BAY OF QUINTE REGION

The following charts from FDI Benchmark, document location-sensitive costs across each of the Bay of Quinte’s key industries; in each chart, you’ll see the cost advantage the Bay of Quinte has over other prominent North American regions.

Total Operating costs (per annum) – Food & beverages manufacturing plant
Source: www.fdibenchmark.com (2020)



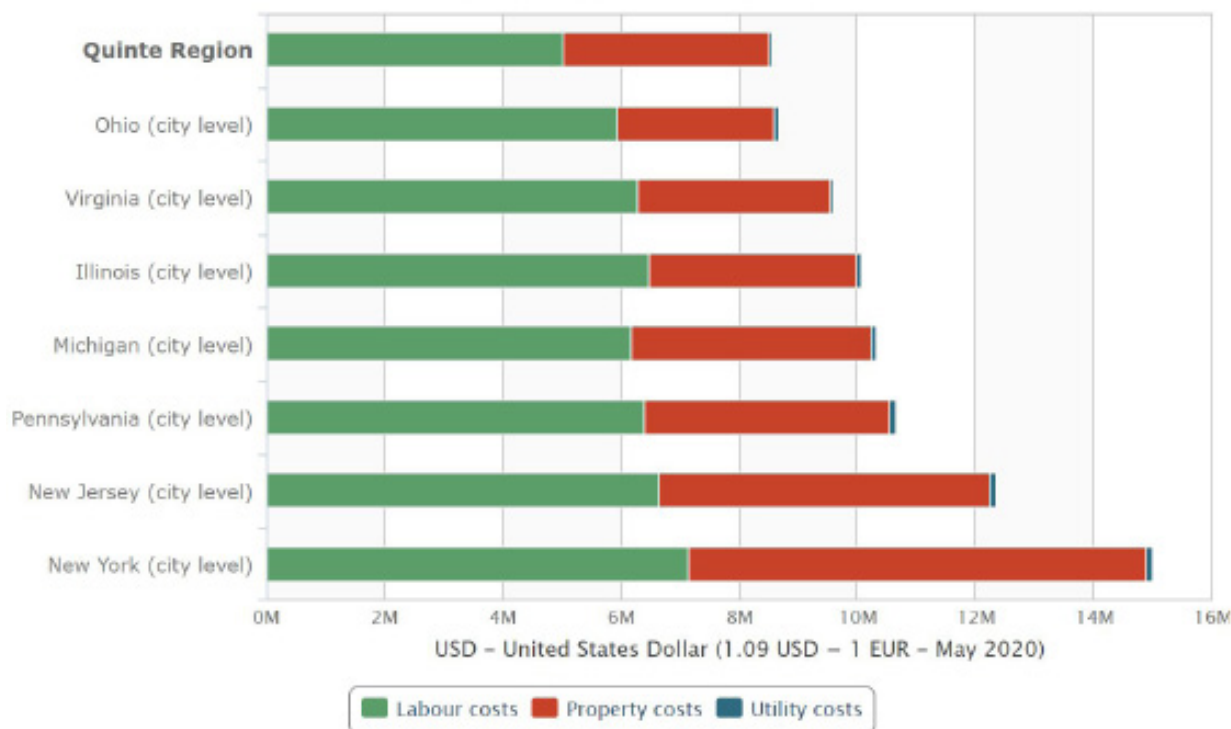
Total Operating costs (per annum) – Logistics centre
Source: www.fdibenchmark.com (2020)



LOWER OPERATIONAL COSTS IN THE BAY OF QUINTE REGION

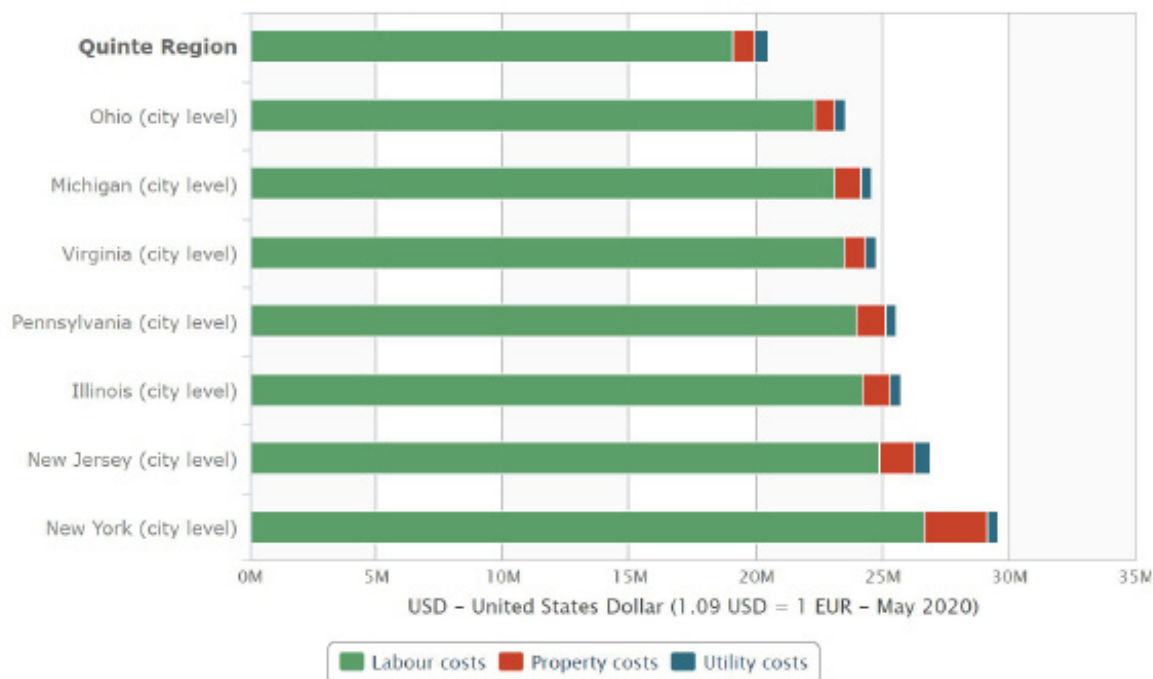
Total Operating costs (per annum) – Plastics manufacturing plant

Source: www.fdibenchmark.com (2020)



Total Operating costs (per annum) – Auto components manufacturing plant

Source: www.fdibenchmark.com (2020)



BAY OF QUINTE

UTILITY INFRASTRUCTURE

Competitive electrical, water and sewage rates further strengthen the Bay of Quinte's competitive advantages. Appendix L shows municipal utility rates from gas, electricity, water, and wastewater in the Bay of Quinte. Appendix M provides 2020 tax rate data.

The Bay of Quinte region is well-served by broadband telecommunications infrastructure from various providers including Bell Canada, Cogeco and others in the region. Even the region's rural areas are now part of the new Eastern Ontario Regional Network (EORN).

- **Cogeco Fibre Services:** Cogeco Business Solutions Fibre Services provides dedicated and secure connectivity for business. They offer highly scalable and secure Ethernet connectivity with up to 10 Gbps plus dedicated Internet, delivered across a proprietary cutting-edge fibre-optic network of more than 11,000 kilometres.
- **EORN includes:** A 5,500-km network of new and existing fibre optic cable, with 160 new access points for Internet Service Providers. Residents and businesses receive high-speed through wired, wireless or satellite technology, depending on the best fit for your area. EORN is already negotiating with Internet service providers to increase coverage area, bandwidth and speed, while bridging the urban-rural price gap.
- **Bell Canada:** The infrastructure in the Bay of Quinte is the same as Canada's major market centres. The High-Speed telecommunications features:
 - Fibre optic cable
 - Centrex DMS 100 switch
 - ISDN, ADSL
 - Bell Canada's diversified, self-healing back



WORKFORCE TRAINING: COLLEGES AND CORPORATE TRAINING FACILITIES

The region's fine primary, secondary, and tertiary school programs prepare our local workforce. The Bay of Quinte region is a leader in the province for preparing and updating the workforce for employment in the food-processing sector. There are multiple, high-quality training institutions and programs nearby.

The Bay of Quinte's educational organizations, including the Loyalist Training & Knowledge Centre and the Academy of Learning, offer customized employee-training programs.

Furthermore, QEDC's Manufacturing Workforce Strategy encourages training and internships. The region has full access to Provincial and Federal

labour programs. Service Canada supports the labour force by subsidizing employee training and wages. In recent years, QEDC, through its Food and Beverage Training series and the Integrated Workforce Development System, obtained \$6 million to provide wage subsidies and training rebates to companies located in the region.



3,000+

FULL TIME STUDENTS

LOYALiST



POST SECONDARY PROGRAMS
INCLUDE:

- INTERNATIONAL TRADE & LOGISTICS
- BIOTECHNOLOGY
- CHEMICAL LABORATORY ASSISTANT
- CHEMICAL ENGINEERING
- ELECTRONIC ENGINEERING
- MANUFACTURING ENGINEERING
- MECHANICAL TECHNIQUES
- CANNABIS APPLIED SCIENCE

LOYALiST

Loyalist is open to working with industry partners to develop programming, whether to better prepare graduating secondary students, to retrain workers for their industry, or to provide customized training to increase productivity. Such training could range from individual courses to certificates, diploma programs, or relevant apprenticeships.

Here are some of the exciting initiatives Loyalist College already offers the business community:

- Loyalist started the province's first Food Processing Operator Apprenticeship training program. The program allows organizations to focus on other fronts while the centre takes care of the in-class training required to train food-processing operators. Other modules include "electrical, mechanical, automation, computer, safety management, environmental and continuous improvement skills totaling 300 hours of in-school learning. Employers participating in this program are eligible to receive an Apprenticeship tax credit of \$5,000 per apprentice per year up to 3 years. In addition the Ministry of Labour, Training and Skills Development (MLTSD) makes a contribution towards the in-class component of the training. See Appendix N for a breakdown of modules offered.



- Loyalist College is home to The Bay of Quinte Skills Centre. The state-of-the-art facility is dedicated to a wide range of skills training including leading-edge programs in manufacturing, multi-modal transportation including aviation, skilled trades, biotechnology and environmental sciences. Opportunities for incubator space may be made available to companies interested in occupying space at the centre.

LOYALIST Training &
COLLEGE Knowledge Centre

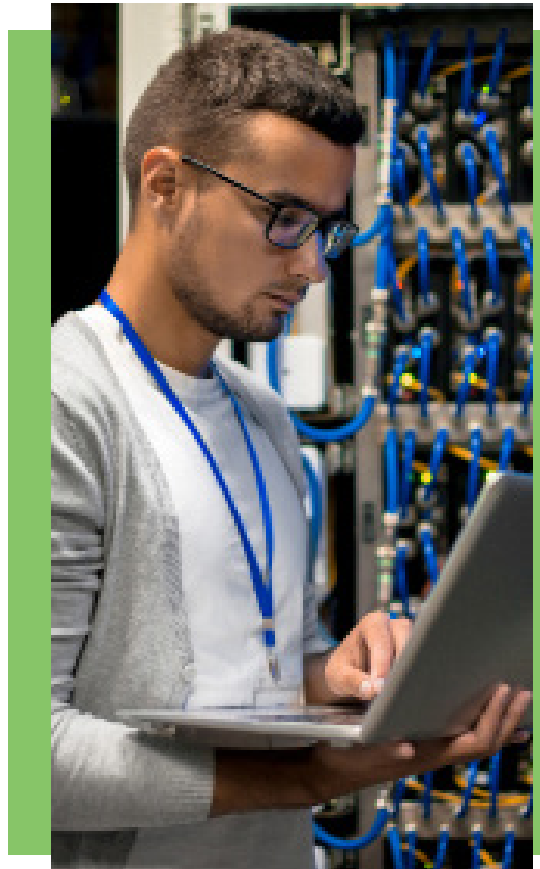
The Loyalist Training and Knowledge Centre specializes in industrial training with customized courses to develop a wide range of skills. These include mechanical, electrical, fork lift training, PLCs, SPCs, welding, hydraulics, pneumatics, machine shop, health and safety issues including all compliance training, as well as, organizational and personal development skills including, leadership, supervision, team skills, communication skills, personal effectiveness, ISO 9000 and many more.

ACADEMY OF LEARNING

The Academy of Learning offers hardware Diplomas, (Computer Service Technician and PC Support Specialist) and Software Diplomas (MicroComputer Software Support and Computerized Accounting). The Ministry of Education and Training recognizes all certificates and diplomas. Diplomas can take up to 10 months to complete, but individual courses are also available for people looking to upgrade their computer skills.

ONTARIO COLLEGES

There are a number of Colleges in Ontario and some located within an hour's drive of Bay of Quinte Region including Durham College (Oshawa), Fleming College (Peterborough) and St. Lawrence College (Kingston).



UNIVERSITIES

There are four major Ontario universities within a one-hour drive from the Bay of Quinte region: Queen's University (Kingston), Royal Military College (Kingston), Trent University (Peterborough) and the Ontario Institute of Technology (Oshawa).

Furthermore, most of Ontario's universities are within a three-hour drive, given the Bay of Quinte region's prime location.



APPENDIX

APPENDIX A: DETAILED LIST OF THE BAY OF QUINTE'S COMMUNITIES

The Quinte Economic Development Commission (QEDC) embraces the Municipality of Brighton, City of Quinte West (Trenton) and the City of Belleville .

The Greater Bay of Quinte region includes the communities/or census districts as follows:

- | | | |
|--|-----------------------------------|-------------------------------------|
| 1. Hastings Highlands | 7. Cramahe Township | 13. City of Belleville |
| 2. Faraday Township (Town of Bancroft) | 8. Alnwick Haldiman | 14. Tyendinaga |
| 3. Wollaston/Limerick | 9. Hamilton Township | 15. Town of Deseronto |
| 4. Marmora & Lake | 10. Municipality of Brighton | 16. Greater Napanee |
| 5. Trent Hills (Town of Campbellford) | 11. City of Quinte West (Trenton) | 17. Tweed (Town) |
| 6. Stirling/Rawdon | 12. Prince Edward County | 18. Centre Hastings (Town of Madoc) |
| | | 19. Tudor & Cashel |



APPENDIX B: 2021 Statistics Demographic Data (Family Characteristics)

2021 Statistics Canada Census Data: Family Characteristics and Household Type

	City of Belleville			City of Quinte West			Municipality of Brighton			Quinte Region*			Greater Quinte Region**		
	Total	Men	Women	Total	Men	Women	Total	Men	Women	Total	Men	Women	Total	Men	Women
FAMILY CHARACTERISTICS															
Total - Census families in private households by family size - 100% data	15,430			34,040			3,800			33,270			66,930		
2 persons	9,015			8,025			2,560			10,600			40,425		
3 persons	3,030			2,860			575			6,465			12,450		
4 persons	2,310			2,180			480			4,970			9,645		
5 or more persons	1,075			970			185			2,230			4,380		
Average size of census families	3			3			3			3			3		
Average number of children in census families with children	2			2			2			2			2		
Total number of census families in private households - 100% data	15,430			34,035			3,805			33,265			66,900		
Total couple families	12,370			31,800			3,345			27,515			56,025		
Married couples	9,545			9,330			2,755			21,630			45,275		
With children	4,100			4,100			875			9,075			18,255		
Without children	5,445			5,230			1,875			12,550			27,030		
Common-law couples	2,825			2,470			595			5,890			11,670		
With children	1,130			1,100			215			2,445			4,625		
Without children	1,695			1,375			375			3,445			7,040		
Total one-parent families	3,060			2,235			455			5,750			9,970		
in which the parent is a woman†	2,425			1,640			335			4,400			7,420		
in which the parent is a man	630			595			125			1,350			2,545		
Total - Persons in private households - 100% data	53,790	26,130	27,660	45,980	22,905	23,065	11,495	5,650	5,845	111,265	54,685	56,570	218,285	107,995	110,340
Total - Persons in census families	42,115	20,700	21,415	38,545	19,240	19,305	9,770	4,905	4,870	90,430	44,845	45,590	180,465	89,970	90,445
Married spouses or common-law partners	24,740	12,345	12,395	23,605	11,785	11,815	6,690	3,345	3,350	55,035	27,475	27,560	113,875	56,840	56,995
Parents in one-parent families	3,055	630	2,425	2,235	595	1,640	460	120	335	5,750	1,345	4,400	9,975	2,540	7,425
Children	14,315	7,725	6,590	12,705	6,855	5,850	2,620	1,435	1,185	20,640	10,015	10,625	56,570	30,560	26,000
in a two-parent family	9,550	5,090	4,460	9,345	5,015	4,330	1,960	1,045	915	20,855	11,150	9,705	41,540	22,230	19,295
in a one-parent family	4,770	2,635	2,135	3,360	1,840	1,520	665	395	270	8,795	4,870	3,925	15,045	8,335	6,705
Total - Persons not in census families in private households - 100% data	11,680	5,430	6,245	7,430	3,665	3,765	1,725	750	975	20,835	9,845	10,985	37,080	17,970	19,085
Living alone	7,335	3,065	4,275	4,730	2,265	2,465	1,215	515	705	13,280	5,845	7,445	24,820	11,260	13,570
Living with other relatives	1,310	575	730	1,040	440	600	260	105	155	2,610	1,120	1,485	4,955	2,120	2,860
Living with non-relatives only	3,030	1,790	1,245	1,660	965	695	250	135	115	4,940	2,890	2,055	8,080	4,620	3,460

*Quinte Region includes the communities of the City of Belleville, City of Quinte West and the Municipality of Brighton

**Greater Quinte Region includes the communities of the City of Belleville, City of Quinte West, Municipality of Brighton, Hamilton Township, Cramahe Township, Alnwick/Haldimand Township, Tyendinaga Township, Stirling Rawdon Township, Municipality of Centre Hastings, Town of Deseronto, Municipality of Tweed, Town of Bancroft, Carlow/Mayo Township, Faraday Township, Municipality of Hastings Highlands, Limerick Township, Madoc Township, Municipality of Marmora and Lake, Tudor and Cashel Township, Wollaston Township, Town of Greater Napanee, City of Prince Edward County,

APPENDIX D: 2021 STATISTICS CANADA DEMOGRAPHIC DATA (EDUCATION)

Characteristics	City of Belleville			City of Quinte West			Municipality of Brighton			Quinte Region*			Greater Quinte Region**		
	Total	Male	Female	Total	Male	Female	Total	Male	Female	Total	Male	Female	Total	Male	Female
Total - Secondary (high school) diploma or equivalency certificate for the population aged 25 years and over in private households - 25% sample data	45,570	21,990	23,678	38,625	19,188	29,450	18,135	4,935	5,195	94,390	46,015	48,375	150,690	93,445	96,655
No high school diploma or equivalency certificate	8,430	4,515	3,915	7,735	4,205	3,530	1,845	935	910	18,010	9,055	8,955	38,150	21,900	17,250
With high school diploma or equivalency certificate	37,140	17,380	19,763	30,890	14,973	25,920	6,290	4,000	4,285	76,380	36,960	39,420	112,540	71,545	79,405
Total - Secondary (high school) diploma or equivalency certificate for the population aged 25 to 64 years in private households - 25% sample data	27,610	13,475	14,140	24,230	12,105	22,050	5,250	2,535	2,715	57,070	28,375	28,695	113,885	58,400	57,485
No high school diploma or equivalency certificate	5,575	2,805	2,770	2,880	1,700	1,180	575	330	245	8,830	4,075	2,750	14,590	8,885	5,705
With high school diploma or equivalency certificate	22,035	10,670	11,370	21,350	10,405	20,870	4,675	2,205	2,470	48,240	24,300	25,945	99,295	49,515	51,780
Total - Highest certificate, diploma or degree for the population aged 25 years and over in private households - 25% sample data	45,570	21,990	23,678	38,625	19,175	29,450	18,135	4,935	5,200	94,390	46,015	48,375	150,130	93,445	96,690
No certificate, diploma or degree	7,555	4,060	3,495	6,885	3,675	3,210	1,610	780	830	16,090	8,315	7,775	33,890	18,090	15,795
High (secondary) school diploma or equivalency certificate	14,660	7,180	7,480	11,340	5,980	6,360	3,435	1,680	1,725	32,290	15,965	16,325	62,190	31,180	31,010
Postsecondary certificate, diploma or degree	26,180	12,680	13,503	18,880	9,520	10,360	3,125	2,625	2,645	47,060	23,635	24,420	94,045	48,175	50,895
Postsecondary certificate or diploma below bachelor level	15,515	7,585	8,010	11,800	6,060	7,220	3,565	1,745	1,820	33,060	15,510	17,550	67,530	32,575	34,955
Apprenticeship or trades certificate or diploma	2,680	1,380	1,300	2,840	1,405	1,435	785	405	385	6,325	3,160	3,165	14,100	7,180	7,020
Non-apprenticeship trades certificate or diploma	1,230	635	595	1,275	640	635	325	165	165	2,820	1,415	1,405	6,550	3,265	3,285
Apprenticeship certificate	1,250	645	605	1,565	765	800	460	240	220	3,270	1,645	1,620	7,550	3,915	3,635
College, CEGEP or other non-university certificate or diploma	12,365	6,085	6,280	10,640	5,320	6,245	3,435	1,660	1,550	25,725	12,860	12,865	50,830	26,315	24,515
University certificate or diploma below bachelor level	680	330	350	540	260	280	175	85	90	1,385	615	770	2,605	1,155	1,450
Bachelor's degree or higher	8,035	3,945	4,090	4,430	1,865	2,565	1,540	720	820	13,985	6,330	7,655	26,500	11,365	15,135
Bachelor's degree	5,640	2,755	2,885	3,275	1,320	1,950	1,090	485	505	10,005	4,860	5,145	18,940	7,640	11,300
University certificate or diploma above bachelor level	595	290	300	270	105	165	110	50	60	975	465	510	1,855	820	1,035
Degree in medicine, dentistry, veterinary medicine or optometry	240	145	95	190	55	45	30	20	15	370	210	160	595	325	270
Master's degree	1,440	695	745	885	340	545	270	140	150	2,395	1,175	1,220	4,380	2,135	2,245
Named doctorate	120	50	70	85	30	55	25	10	15	215	85	130	340	125	215
Total - Highest certificate, diploma or degree for the population aged 25 to 64 years in private households - 25% sample data	27,610	13,475	14,140	24,230	12,105	22,050	5,250	2,535	2,715	57,070	28,375	28,695	113,885	58,400	57,485
No certificate, diploma or degree	2,960	1,575	1,385	2,485	1,235	1,250	640	315	305	6,000	3,000	2,995	12,600	6,245	6,355
High (secondary) school diploma or equivalency certificate	8,420	4,215	4,205	8,065	4,080	4,985	2,715	1,315	1,395	18,200	9,010	9,190	36,105	18,185	17,920
Postsecondary certificate, diploma or degree	16,725	7,980	8,740	11,670	5,785	7,165	3,065	1,390	1,380	32,960	16,810	18,385	65,090	29,425	35,665
Postsecondary certificate or diploma below bachelor level	10,590	4,870	5,720	10,320	4,810	5,510	2,190	1,040	1,150	23,290	10,720	12,305	46,540	22,220	24,320
Apprenticeship or trades certificate or diploma	1,515	765	750	1,300	650	650	315	160	160	3,875	1,935	1,940	8,815	4,350	4,465
Non-apprenticeship trades certificate or diploma	730	375	355	375	185	190	100	50	50	1,765	875	890	3,830	1,910	1,920
Apprenticeship certificate	780	390	390	1,285	625	660	385	195	190	2,110	1,060	1,050	5,085	2,435	2,650
College, CEGEP or other non-university certificate or diploma	8,055	3,930	4,125	8,880	4,370	4,510	2,660	1,240	1,215	18,335	9,160	10,175	36,600	17,790	18,810
University certificate or diploma below bachelor level	425	205	220	125	60	65	40	20	20	600	280	320	1,520	660	860
Bachelor's degree or higher	5,640	2,755	2,885	3,275	1,320	2,010	1,090	500	525	9,875	4,830	5,790	18,140	7,070	11,070
Bachelor's degree	4,005	1,925	2,080	2,225	900	1,325	745	345	400	7,345	3,530	4,305	13,195	4,880	8,315
University certificate or diploma above bachelor level	415	205	205	195	70	120	40	20	25	830	390	445	1,225	490	510
Degree in medicine, dentistry, veterinary medicine or optometry	170	95	75	120	40	60	30	15	15	255	125	130	430	170	210
Master's degree	980	465	515	530	200	330	145	75	90	1,675	770	905	3,075	1,350	1,725
Named doctorate	85	35	50	60	25	35	15	7	10	190	80	110	340	135	195
Total - Major field of study - Classification of Instructional Programs (CIP) 2021 for the population aged 25 years and over in private households - 25% sample data	45,570	21,990	23,678	38,625	19,175	29,450	18,135	4,935	5,200	94,390	46,015	48,375	150,130	93,445	96,690
No postsecondary certificate, diploma or degree	22,070	11,250	10,820	20,240	10,020	9,220	4,580	2,470	2,550	47,290	24,375	22,915	98,065	49,480	48,585
Education	1,490	740	750	870	430	440	210	100	100	2,740	1,370	1,370	5,430	2,715	2,715
Indigenous and foreign languages, literatures, and linguistics	45	0	45	50	0	50	20	0	30	115	0	115	200	0	200
English language and literature/literature	285	140	145	125	65	60	30	15	15	485	240	245	1,015	500	515
Liberal arts and sciences, general studies and humanities	245	120	125	180	85	95	45	20	25	485	240	245	875	435	440
Interdisciplinary humanities	20	0	20	20	0	20	10	0	10	50	0	50	100	0	100
Philosophy and religious studies	55	30	25	30	15	15	10	5	5	115	60	55	205	105	100
Theology and religious vocations	185	90	95	90	45	45	25	10	15	305	150	155	590	290	300
History	170	85	85	105	50	55	30	15	15	330	160	170	600	300	300
French language and literature/le français	35	15	20	25	10	15	10	5	5	70	30	40	120	60	60
Social and behavioural sciences and law	3,040	1,520	1,520	2,240	1,120	1,120	560	280	280	6,075	3,030	3,045	12,140	6,070	6,070
Area, ethnic, cultural, gender, and group studies	40	0	40	40	0	40	20	0	20	70	0	70	140	0	140
Communication, journalism and related programs	440	220	220	275	130	145	70	35	35	735	365	370	1,170	585	585
Family and consumer sciences/human sciences	515	250	265	240	120	120	60	30	30	1,035	515	520	1,560	780	780
Legal professions and studies	380	190	190	280	140	140	70	35	35	760	380	380	1,520	760	760
Interdisciplinary social and behavioural sciences	55	25	30	30	15	15	10	5	5	110	55	55	220	110	110
Psychology	485	240	245	330	165	165	80	40	40	965	480	485	1,640	820	820
Social sciences	710	350	360	505	250	255	125	60	65	1,385	680	705	2,735	1,360	1,375
Business, management and public administration	4,615	2,300	2,315	3,350	1,670	1,680	840	420	420	8,590	4,245	4,345	16,600	8,270	8,330
Accounting and computer science	10	0	0	0	0	0	0	0	0	10	0	10	20	0	20
Public administration and social service professions	880	440	440	525	260	265	130	65	65	1,740	870	870	3,480	1,740	1,740
Business, management, marketing and related support services	3,725	1,860	1,865	2,825	1,410	1,415	710	355	355	7,410	3,705	3,730	12,100	6,030	6,070
Physical and life sciences and technologies	895	440	455	480	240	240	120	60	60	1,780	890	890	2,670	1,335	1,335
Biological and biomedical sciences	400	200	200	260	130	130	65	30	35	815	405	410	1,260	630	630
Biological and physical sciences	145	70	75	95	45	50	25	10	15	315	155	160	460	230	230
Other interdisciplinary physical and life sciences	20	0	20	0	0	0	0	0	0	20	0	20	40	0	40
Physical sciences	130	65	65	100	50	50	25	10	15	280	140	140	390	195	195
Science technologies/technicians	110	55	55	60	30	30	15	7	7	220	110	110	240	120	120
Mathematics, computer and information sciences	765	380	385	580	290	290	140	70	70	1,515	755	760	2,680	1,335	1,345
Computer and information sciences and support services	585	290	295	420	210	210	105	50	50	1,170	585	585	2,110	1,055	1,055
Literary science	65	30	35	30	15	15	10	5	5	130	65	70	145	70	75
Mathematics and statistics	95	45	50	55	25	30	15	7	7	185	90	95	230	115	120
Interdisciplinary mathematics, computer and information sciences	10	0	0												

Medical residency/fellowship programs	95	53	38	35	10	10	0	0	0	0	330	60	40	115	30	0
Personal, protective and transportation services	1,875	965	915	1,870	970	895	395	250	165	4,140	2,385	1,955	8,000	4,195	3,885	
Culinary, entertainment, and personal services	850	235	625	740	170	805	135	30	100	1,725	380	1,335	1,500	675	2,825	
Military science, leadership and operational art	15	35	0	35	20	0	0	0	0	30	40	0	30	40	0	
Military technologies and applied sciences	10	30	0	40	60	0	0	0	0	75	70	0	75	30	0	
Security and protective services	770	485	285	735	880	245	145	105	85	1,640	1,870	170	1,155	1,000	1,145	
Transportation and materials moving	230	225	0	235	205	35	105	105	0	630	95	35	1,430	1,115	80	
Other	15	30	0	0	0	0	0	0	0	15	10	0	15	10	0	
Total - Major field of study - Classification of Instructional Programs (CIP) 2021 for the population aged 25 to 64 years in private households - 25% sample data	27,915	13,475	14,140	24,230	17,160	12,045	5,250	2,535	2,720	57,075	28,170	28,905	113,885	56,400	57,485	
No postsecondary certificate, diploma or degree	11,365	6,238	5,175	10,535	6,005	4,530	2,185	1,150	1,035	24,105	13,365	13,740	48,805	27,000	21,795	
Education	880	235	685	540	110	425	160	50	110	1,580	375	1,200	1,130	690	2,430	
Visual and performing arts, and communications technologies	490	150	290	480	145	235	120	30	70	1,010	290	825	1,215	815	1,125	
Communications technologies/technicians and support services	108	78	38	90	0	10	10	10	0	388	120	40	280	205	30	
Visual and performing arts	888	126	268	388	148	208	110	40	70	890	278	978	1,690	978	1,060	
Humanities	625	308	318	480	205	285	130	50	70	1,235	555	685	2,130	940	1,105	
Indigenous and foreign languages, literatures, and linguistics	25	0	25	40	0	35	0	0	0	85	0	40	115	0	110	
English language as a lit/ta/ra/lectors	170	65	105	85	25	70	30	0	25	295	90	280	580	140	400	
Liberal arts and sciences, general studies and humanites	165	85	88	155	75	85	38	0	15	340	368	180	555	125	300	
Interdisciplinary humanities	15	0	15	30	0	10	30	0	0	35	0	25	105	0	95	
Philosophy and religious studies	25	20	18	40	25	15	30	0	0	75	45	25	140	65	85	
Theology and religious vocations	80	68	28	65	68	25	15	10	10	380	110	55	105	180	110	
History	130	75	68	85	40	40	25	20	0	240	115	200	380	205	140	
French language and literature/lectors CAN	20	0	15	0	0	0	0	0	0	20	0	15	30	0	15	
Social and behavioural sciences and law	2,240	830	1,630	1,790	440	1,945	408	108	308	4,485	1,285	3,200	8,145	2,035	6,280	
Arts, ethnic, cultural, gender, and group studies	10	0	28	20	0	20	0	0	0	40	0	40	90	0	90	
Communication, journalism and related programs	840	180	218	240	100	178	30	10	20	630	260	338	1,030	400	630	
Family and consumer sciences/human sciences	708	66	648	688	0	968	148	10	188	1,488	118	1,380	2,690	160	2,530	
Legal professions and studies	300	75	235	235	55	180	60	15	65	595	145	450	1,100	260	1,035	
Interdisciplinary social and behavioural sciences	45	10	35	75	15	60	15	10	0	135	15	85	285	35	230	
Psychology	280	65	215	250	60	180	70	25	45	600	150	450	1,025	200	800	
Social sciences	520	245	275	380	170	210	90	35	55	990	450	540	1,855	860	995	
Business, management and public administration	1,200	1,180	2,010	2,470	720	1,708	940	180	380	6,200	2,380	4,120	11,980	4,880	7,095	
Accounting and computer science	0	0	0	0	0	0	0	0	0	0	0	0	30	0	0	
Public administration and social service professions	640	85	568	480	55	350	100	20	80	1,140	160	980	2,130	285	1,840	
Business, management, marketing and related support services	2,555	1,690	1,468	2,690	865	1,395	425	190	278	5,040	1,915	3,125	9,775	1,120	6,080	
Physical and life sciences and technologies	515	198	308	370	220	150	70	35	35	955	445	585	1,755	745	990	
Biological and biomedical sciences	248	75	178	150	68	85	30	10	25	425	250	280	815	150	545	
Biological and physical sciences	85	40	45	78	50	30	0	0	0	380	90	75	1,85	90	1,45	
Other interdisciplinary physical and life sciences	20	0	20	0	0	0	0	0	0	20	0	20	30	0	20	
Physical sciences	108	48	68	108	88	28	30	20	15	288	148	180	388	288	198	
Science technologies/technicians	65	35	35	35	25	10	0	0	0	100	60	45	145	60	10	
Mathematics, computer and information sciences	520	300	228	445	280	180	95	55	60	1,060	615	420	1,895	1,200	580	
Computer and information sciences and support services	435	275	168	430	265	145	70	50	25	965	590	330	1,615	1,075	540	
Library science	38	38	38	0	0	0	0	0	0	88	18	38	48	38	88	
Mathematics and statistics	38	38	38	38	18	18	38	0	28	88	38	48	148	38	78	
Interdisciplinary mathematics, computer and information sciences	0	0	0	0	0	0	0	0	0	0	0	0	0	0	0	
Architecture, engineering, and related trades	1,075	2,835	245	3,045	2,775	270	670	600	70	6,780	6,210	585	14,445	11,330	1,075	
Architecture and related services	115	88	35	75	40	25	0	0	0	490	115	80	315	215	60	
Engineering	625	548	85	250	210	50	85	90	38	960	810	165	1,500	1,130	235	
Engineering/engineering related technologies/technicians	905	825	88	815	700	115	168	135	25	1,880	1,660	120	3,805	3,350	440	
Historic preservation and conservation	0	0	0	0	0	0	0	0	0	0	0	0	0	0	0	
Construction trades	530	548	10	688	585	15	170	170	0	1,310	1,295	25	3,380	3,270	35	
Mechanic and repair technologies/technicians	615	585	38	668	825	50	165	160	10	3,640	1,550	90	3,708	3,565	130	
Precision production	265	268	0	445	430	20	95	88	10	805	770	30	1,605	1,615	30	
Agriculture, natural resources and conservation	340	180	188	405	135	110	105	55	55	810	430	448	2,240	1,140	1,095	
Agricultural and veterinary science/services/operations and related fields	275	125	148	280	105	155	75	30	45	610	280	348	1,508	670	845	
Natural resources and conservation	90	58	58	145	30	35	30	20	10	200	195	95	735	485	230	
Health and related fields	2,970	148	2,820	2,215	830	1,820	508	90	480	5,690	888	4,800	11,638	1,708	9,738	
Design for human health	0	0	0	0	0	0	0	0	0	0	0	0	0	0	0	
Parks, recreation, leisure, fitness, and kinesiology	260	115	168	170	70	85	10	10	25	460	195	200	680	415	550	
Health professions and related programs	2,670	350	2,388	2,048	215	1,820	480	45	435	5,190	690	4,500	10,355	1,195	9,130	
Health professions residency/fellowship programs	0	0	0	0	0	0	0	0	0	0	0	0	18	0	0	
Medical residency/fellowship programs	50	38	28	38	18	0	0	0	0	68	40	28	78	58	38	
Personal, protective and transportation services	1,315	718	638	1,588	740	730	280	130	110	1,115	1,635	1,475	5,995	3,110	2,815	
Culinary, entertainment, and personal services	530	155	385	580	110	480	100	30	75	2,240	285	950	2,285	660	1,795	
Military science, leadership and operational art	15	35	0	35	25	0	0	0	0	50	40	30	58	40	30	
Military technologies and applied sciences	0	0	0	35	35	0	0	0	0	35	35	0	35	35	0	
Security and protective services	815	380	238	588	375	310	115	80	35	1,530	835	435	2,485	1,515	915	
Transportation and materials moving	165	160	0	250	228	30	68	88	0	480	480	30	1,080	1,010	40	
Other	15	30	0	0	0	0	0	0	0	15	10	0	15	10	0	
Total - location of study compared with province or territory of residence for the population aged 25 to 64 years in private households - 25% sample data	27,915	13,475	14,140	24,230	17,160	12,045	5,250	2,535	2,720	57,075	28,170	28,905	113,885	56,400	57,485	
No postsecondary certificate, diploma or degree	11,885	6,130	5,175	10,635	6,005	4,530	2,185	1,150	1,035	24,105	13,365	13,740	48,805	27,000	21,795	
Postsecondary certificate, diploma or degree	16,230	7,345	8,965	13,675	11,155	7,515	3,065	1,385	1,685	32,970	14,805	15,165	65,080	29,400	35,690	
Location of study inside Canada	54,090	6,538	8,188	12,985	5,870	7,130	2,810	1,265	3,565	38,505	14,645	16,865	61,095	27,585	31,605	
Same as province or territory of residence	13,545	6,015	7,538	11,465	5,165	6,305	2,595	1,160	3,480	27,585	12,820	15,235	56,325	25,695	28,160	
Different than province or territory of residence	4,145	495	655	1,548	725	815	235	105	125	2,020	1,325	1,585	4,458	2,690	3,330	
Location of study outside Canada	1,540	758	785	685	290	395	240	135	115	2,465	1,185	1,285	3,978	1,810	2,035	
Americas	348	158	168	250	148	208	80	40	35	678	375	300	1,148	588	530	
United States of America	290	125	125	200	110	90	70	40	30	500	275	240	938	435	430	
Mexico	58	33	0	0	0	0	0	0	0	178	100	60	210	153	100	
Asia	18	38	0	18	18	0	0	0	0	38	20	0	38	18	0	
Brazil	0	0	0	0	0	0	0	0	0	0	0	0	0	0	0	
Colombia	0	0	0	18	0	0	0	0	0	18	0	0	18	0	0	
Other	18	38	0	18	18	0	0	0	0	38	0	0	38	18	0	
Other locations of study in Americas	38	38	0	38	18	0	0	0	0	18	38	38	18	38	18	
Europe	220	118	118	185	60	130	75	45	30	480	215	260	1,080	690	505	
Germany	10	38	0	35	0	0	0	0	0	35	10	30	25	10	30	
Netherlands	10	0	0	18	10	0	10	0	0	30	10	0	38	10	0	
Poland	10	0	0	0	0	0	0	0	0	10	0	0	10	0	0	
Romania	0	0	0	10	10	0	0	0	0	10	10	0				

China	50	20	30	45	10	35	10	0	10	105	30	75	120	30	85
Korea, South	45	15	30	15	10	15	15	10	0	75	85	05	75	15	45
Philippines	155	35	115	65	10	60	20	0	15	240	45	190	355	75	265
India	575	305	260	30	15	10	0	0	0	605	120	270	605	130	270
Pakistan	10	0	0	20	10	10	0	0	0	30	10	10	30	10	10
Other locations of study in Asia	15	0	0	15	0	10	0	0	0	30	0	10	50	0	30
Oceania	65	25	40	15	10	10	20	10	15	100	45	65	165	80	100
Australia	65	25	40	15	10	10	20	10	15	100	45	65	165	80	100
New Zealand	0	0	0	0	0	0	0	0	0	0	0	0	10	10	0

Quinte Region includes the communities of the City of Belleville, City of Quinte West and the Municipality of Brighton

*Greater Quinte Region includes the communities of the City of Belleville, City of Quinte West, Municipality of Brighton, Hamilton Township, Cranston Township, Altonville/Malden and Toronto, Tyndalburg Township, Shilling Rowdon Township, Municipality of Centre Hastings, Town of Deseronto, Municipality of Tweed, Town of Blackfoot, Carleton Place Township, Faraday Township, Municipality of Hastings Highlands, Glenora Township, Madoc Township, Municipality of Morrisburg and Lake, Tupper and Cobden Township, Wolfston Township, Town of Greater Napanee, City of Prince Edward County.

APPENDIX E: 2021 STATISTICS CANADA DEMOGRAPHIC DATA (AGE AND GENDER AT BIRTH CHARACTERISTICS)

Characteristics	City of Belleville			City of Quinte West			Municipality of Brighton			Quinte Region*			Greater Quinte Region **		
	Total	Men	Women	Total	Men	Women	Total	Men	Women	Total	Men	Women	Total	Men	Women
Total - Age groups of the population - 100% data	55,070	26,530	28,445	46,560	23,295	23,265	12,110	6,175	5,935	125,850	62,185	63,670	248,915	123,080	125,830
0 to 14 years	8,225	4,230	3,995	7,355	3,790	3,565	1,365	715	645	18,210	9,450	8,760	34,630	17,830	16,800
0 to 4 years	2,490	1,315	1,175	2,300	1,220	1,085	355	200	190	5,580	2,935	2,640	10,530	5,490	5,020
5 to 9 years	2,790	1,415	1,370	2,475	1,255	1,225	470	245	230	6,205	3,160	3,055	11,825	6,050	5,800
10 to 14 years	2,945	1,495	1,445	2,575	1,320	1,260	495	270	225	6,510	3,355	3,155	12,285	6,300	5,995
15 to 64 years	33,820	16,720	17,100	26,860	14,545	14,315	6,740	3,545	3,195	76,160	38,355	37,805	148,285	74,290	73,975
15 to 19 years	2,810	1,460	1,350	2,320	1,170	1,150	485	255	230	6,100	3,140	2,960	11,800	6,095	5,710
20 to 24 years	3,120	1,625	1,490	2,195	1,180	1,020	490	265	220	6,295	3,335	2,950	11,155	5,850	5,290
25 to 29 years	3,550	1,810	1,740	2,615	1,360	1,260	515	290	225	7,195	3,750	3,450	12,740	6,555	6,220
30 to 34 years	3,855	1,725	1,635	3,000	1,540	1,455	615	370	240	7,585	4,005	3,570	13,695	7,130	6,555
35 to 39 years	3,155	1,600	1,560	2,075	1,060	1,015	595	340	260	7,220	3,780	3,455	13,405	6,815	6,610
40 to 44 years	3,185	1,505	1,685	2,095	1,095	1,005	540	280	260	6,870	3,370	3,510	12,985	6,410	6,580
45 to 49 years	3,070	1,505	1,565	2,460	1,200	1,260	610	330	280	6,750	3,365	3,385	13,380	6,660	6,725
50 to 54 years	3,185	1,525	1,660	2,910	1,390	1,520	685	345	340	7,465	3,605	3,860	15,240	7,495	7,815
55 to 59 years	4,175	1,970	2,205	3,955	1,960	1,995	1,000	485	515	10,130	4,900	5,230	21,155	10,270	10,880
60 to 64 years	4,210	2,000	2,215	3,920	1,945	1,980	1,205	585	625	10,540	5,115	5,445	22,705	11,310	11,595
65 years and over	13,030	5,675	7,350	10,345	4,870	5,470	4,005	1,915	2,090	31,385	14,375	17,000	66,000	30,985	35,010
65 to 69 years	3,765	1,725	2,035	3,295	1,590	1,710	1,170	570	605	9,400	4,455	4,955	20,445	9,860	10,605
70 to 74 years	3,280	1,490	1,795	2,820	1,380	1,435	1,215	570	645	8,530	4,010	4,520	18,270	8,870	9,390
75 to 79 years	2,350	1,035	1,315	1,850	875	970	735	360	375	5,670	2,630	3,035	11,775	5,715	6,060
80 to 84 years	1,695	735	965	1,260	570	690	480	255	235	3,915	1,815	2,125	7,810	3,650	4,165
85 years and over	1,935	895	1,245	1,115	460	660	405	160	240	3,860	1,475	2,385	7,675	2,880	4,795
85 to 89 years	1,140	465	680	705	320	385	275	115	160	2,395	1,015	1,385	4,865	2,035	2,805
90 to 94 years	605	190	415	305	115	190	90	40	55	1,090	385	715	2,135	795	1,475
95 to 99 years	175	45	125	100	25	80	30	10	20	335	90	245	600	140	430
100 years and over	20	5	15	5	0	5	0	0	0	25	5	20	80	10	55
Total - Distribution (%) of the population by broad age groups - 100% data															
0 to 14 years	14.9	15.9	14	15.8	16.3	15.3	11.3	11.6	10.9	14	14.6	13.4	13.6	14.1	13.0
15 to 64 years	61.4	62.8	60.1	62	62.7	63.3	55.7	57.4	53.8	59.7	61.0	58.4	58.8	60.0	58.5
65 years and over	23.7	21.3	25.8	22.2	21	21.4	33.1	31	35.2	26.3	24.4	28.1	28.4	26.7	28.8
85 years and over	3.5	2.6	4.4	2.4	2	2.8	3.3	2.6	4	3.1	2.4	3.7	2.4	2.2	2.7
Average age of the population	44.5	42.9	45.9	44	43.2	44.9	50.2	48.9	51.5	46.2	45.0	47.4	47.5	46.9	47.9
Median age of the population	45.2	42.8	47.6	45.6	44	47.2	56	53.6	58	45.6	44.0	47.6	53.6	53.6	53.6

*Quinte Region includes the communities of the City of Belleville, City of Quinte West and the Municipality of Brighton

**Greater Quinte Region includes the communities of the City of Belleville, City of Quinte West, Municipality of Brighton, Hamilton Township, Cranston Township, Altonville/Malden and Toronto, Tyndalburg Township, Shilling Rowdon Township, Municipality of Centre Hastings, Town of Deseronto, Municipality of Tweed, Town of Blackfoot, Carleton Place Township, Faraday Township, Municipality of Hastings Highlands, Glenora Township, Madoc Township, Municipality of Morrisburg and Lake, Tupper and Cobden Township, Wolfston Township, Town of Greater Napanee, City of Prince Edward County.

Source: Statistics Canada

APPENDIX F: 2021 Statistics Canada Demographic Data (Language)

Characteristics	City of Belleville			City of Quinte West			Municipality of Brighton			Quinte Region*			Greater Quinte Region**		
	Total	Male	Female	Total	Male	Female	Total	Male	Female	Total	Male	Female	Total	Male	Female
Total - Knowledge of official languages for the total population excluding institutional residents - 100% data	54,255	26,300	27,955	46,145	23,085	23,060	11,550	5,665	5,885	112,090	55,090	57,000	283,455	135,525	147,930
English only	53,425	24,690	28,735	42,035	21,040	20,995	10,760	5,515	5,245	109,490	53,045	56,445	268,450	129,450	139,000
French only	80	35	45	140	60	80	5	5	5	175	75	100	200	100	100
English and French	3,850	1,445	2,405	4,000	1,980	2,020	785	345	440	8,105	3,790	4,315	14,450	6,490	7,960
Neither English nor French	220	110	110	95	45	50	15	10	10	240	140	100	500	300	200
Total - First official language spoken for the total population excluding institutional residents - 100% data	54,255	26,300	27,955	46,145	23,085	23,060	11,550	5,665	5,885	112,090	55,090	57,000	283,455	135,525	147,930
English	53,580	25,810	27,770	44,370	22,310	22,060	11,285	5,540	5,740	108,815	53,490	55,325	278,500	131,915	146,585
French	780	355	425	1,700	805	895	240	115	125	2,730	1,305	1,425	6,180	3,140	3,040
English and French	95	40	55	85	40	45	10	5	5	190	85	105	4,340	2,195	2,145
Neither English nor French	300	150	150	300	150	150	15	10	5	300	140	160	600	300	300
Total - Mother tongue for the total population excluding institutional residents - 200% data	34,230	16,300	17,930	46,145	23,085	23,060	11,550	5,665	5,885	112,090	55,090	57,000	273,730	133,170	140,560
Single responses	34,180	16,250	17,930	46,145	23,085	23,060	11,550	5,665	5,885	112,090	55,090	57,000	273,730	133,170	140,560
Official languages	48,450	24,000	24,450	44,540	22,800	21,740	10,820	5,820	5,000	108,815	53,490	55,325	268,570	129,570	139,000
English	48,450	24,000	24,450	44,540	22,800	21,740	10,820	5,820	5,000	108,815	53,490	55,325	268,570	129,570	139,000
French	80	35	45	1,700	800	900	250	110	140	2,730	1,305	1,425	6,180	3,140	3,040
Non-official languages	3,820	1,850	2,000	2,000	950	1,070	610	280	315	6,500	3,140	3,360	11,250	5,810	5,440
Indigenous languages	5	0	5	0	0	0	0	0	0	5	0	5	15	0	15
Non-Indigenous languages	3,815	1,850	2,000	2,000	950	1,070	610	280	315	6,495	3,140	3,355	11,235	5,810	5,425
Afro-Asiatic languages	305	95	310	25	25	25	25	25	25	0	0	300	100	100	100
Semitic languages	305	95	310	25	25	25	25	25	25	0	0	300	100	100	100
Arabic	30	5	25	5	5	5	5	5	5	0	0	25	5	20	5
Hebrew	5	0	5	0	0	0	0	0	0	0	0	5	0	5	0
Yiddish	5	0	5	0	0	0	0	0	0	0	0	5	0	5	0
Austro-Asiatic languages	95	40	55	40	20	20	0	0	0	130	60	70	160	80	80
Khmer (Cambodian)	5	0	5	0	0	0	0	0	0	5	0	5	5	0	5
Vietnamese	90	40	50	40	20	20	0	0	0	125	60	65	155	80	75
Austro-Asiatic languages	290	95	195	90	40	50	0	0	0	130	60	70	160	80	80
Malay, n.o.c.	30	5	25	0	0	0	0	0	0	30	5	25	10	5	5
Chinese	30	10	20	0	0	0	0	0	0	30	10	20	10	5	5
Hiligaynon	30	5	25	0	0	0	0	0	0	30	10	20	10	5	5
Banarasi	20	10	10	0	0	0	0	0	0	20	10	10	10	5	5
Indonesian	30	10	20	0	0	0	0	0	0	30	10	20	10	5	5
Tagalog (Filipino, Pilipino)	30	10	20	0	0	0	0	0	0	30	10	20	10	5	5
Malay-Indic	30	10	20	0	0	0	0	0	0	30	10	20	10	5	5
Celtic languages	5	0	5	0	0	0	0	0	0	5	0	5	5	0	5
Celtic, n.o.c.	5	0	5	0	0	0	0	0	0	5	0	5	5	0	5
Dravidian languages	270	110	160	60	30	30	0	0	0	270	110	160	600	240	360
Tamil	5	0	5	0	0	0	0	0	0	5	0	5	5	0	5
Telugu	20	10	10	0	0	0	0	0	0	20	10	10	10	5	5
Tamil	20	10	10	0	0	0	0	0	0	20	10	10	10	5	5

Italic (Romance) languages	388	280	308	385	178	290	89	90	30	1,068	500	580	1,288	929	930
Italian	126	70	65	125	60	60	35	20	10	206	110	110	565	285	285
Portuguese	158	70	85	78	38	38	20	35	10	190	120	110	405	290	235
România	20	15	15	20	5	15	5	5	0	50	20	30	100	45	30
Spanish	290	120	140	140	60	80	19	20	20	470	210	260	710	380	400
Japanese	18	5	10	10	0	10	0	0	0	28	5	20	38	30	20
Korean	115	60	55	80	45	50	15	30	10	120	115	115	265	145	140
Niger-Congo languages	15	10	10	20	10	15	0	0	0	35	20	25	60	25	30
Miyani	5	0	5	0	0	0	0	0	0	5	0	5	5	0	5
Yoruba	5	5	5	0	0	0	0	0	0	5	5	5	5	5	5
Niger-Congo languages, n.l.c.	5	0	0	5	5	5	0	0	0	20	5	5	10	5	5
Sign languages	70	40	25	35	15	20	0	0	0	305	55	50	150	70	75
American Sign Language	50	35	20	35	20	20	5	0	0	25	50	40	120	65	55
Sign languages, n.l.c.	20	5	5	0	0	0	0	0	0	30	5	5	30	5	5
Sino-Tibetan languages	205	235	270	275	80	90	30	20	15	530	230	290	810	365	450
Chinese languages	200	215	245	275	75	95	30	20	15	465	210	255	765	305	425
Mandarin	180	70	85	80	45	45	20	20	5	270	125	155	440	200	240
Min Nan (Chauokion, Teochow, Fokien, Taiwanese)	5	0	0	0	0	0	0	0	0	5	0	0	20	5	5
Hak (Cantonese)	90	40	50	80	35	45	20	5	5	180	75	100	280	125	135
Chinese, n.o.s.	10	5	0	5	0	0	0	0	0	25	5	0	20	5	0
Tibeto-Burman languages	40	20	20	0	0	0	0	0	0	40	20	20	60	20	20
Tibetan	40	20	20	0	0	0	0	0	0	40	20	20	60	20	20
Tai-Kadai languages	20	5	10	0	0	0	0	0	0	20	5	10	35	20	25
Thai	20	5	10	0	0	0	0	0	0	20	5	10	30	20	20
Uzbek	0	0	0	0	0	0	0	0	0	0	0	0	15	15	5
Uralic languages	60	20	45	65	40	25	25	10	10	150	75	80	415	185	205
Estonian	5	0	5	10	10	0	5	5	0	20	15	5	60	40	20
Hungarian	35	10	25	35	20	15	15	5	5	85	35	35	185	80	95
Multiple responses	525	440	490	685	325	350	185	40	65	1,725	815	910	2,715	1,200	1,430
English and French	140	115	120	120	160	105	45	35	30	605	290	315	5,380	2,720	2,660
English and non-official language(s)	580	275	300	295	140	250	50	20	30	625	440	480	5,675	2,880	2,800
French and non-official language(s)	10	5	0	20	10	10	0	0	0	30	15	10	45	30	20
English, French and non-official language(s)	20	5	10	20	5	15	0	0	0	40	10	25	70	20	40
Multiple non-official languages	60	85	65	85	15	20	30	5	10	120	50	70	170	70	130
Total - All languages spoken at home for the total population excluding institutional residents - 100% data	54,155	28,300	27,955	46,245	21,085	23,255	11,500	5,665	5,800	132,090	55,050	57,000	219,090	118,080	135,885
English	49,625	24,060	25,565	43,085	21,505	21,495	10,995	5,420	5,575	103,625	50,385	52,635	216,250	106,040	108,295
French	190	95	95	735	375	360	85	30	35	990	500	490	1,520	675	640
Non-official language	884	430	434	820	160	160	60	30	30	1,234	615	624	2,064	1,040	1,034
Indigenous	0	0	0	0	0	0	0	0	0	0	0	0	0	0	0
Non-Indigenous	884	430	434	820	160	160	60	30	30	1,234	615	624	2,064	1,040	1,034
English and French	540	240	300	870	400	410	180	45	55	1,455	970	794	6,635	3,380	3,345
English and non-official language(s)	2,815	1,585	1,430	1,235	585	605	380	125	175	4,350	2,070	2,260	11,190	5,400	5,640
French and non-official language(s)	18	5	10	5	0	0	0	0	0	20	5	10	4,984	2,084	2,124
English, French and non-official language(s)	130	60	70	105	45	45	25	25	10	380	120	130	4,714	2,084	2,130
Multiple non-official languages	85	40	45	20	10	10	0	0	0	105	50	55	160	80	75
Total - Language spoken most often at home for the total population excluding institutional residents - 100% data	54,155	28,300	27,955	46,245	21,085	23,255	11,500	5,665	5,800	132,090	55,050	57,000	219,130	118,090	135,895
Single responses	53,525	25,965	27,560	45,820	21,865	22,935	11,490	5,640	5,820	131,835	54,490	56,350	217,395	112,315	135,200
Official languages	51,615	25,600	26,600	45,180	21,560	22,615	11,370	5,575	5,790	108,365	53,140	55,025	213,445	110,380	133,135

English	51,340	24,870	26,485	44,245	22,075	22,175	11,290	5,540	5,790	106,870	52,490	54,390	218,830	109,475	112,360
French	280	135	145	835	485	440	80	30	40	1,295	655	630	1,620	830	780
South Asian languages	80	45	35	5	0	0	0	0	0	35	45	40	120	90	80
Austro-Asiatic languages	70	30	30	20	30	10	0	0	0	90	40	30	90	40	50
Vietnamese	70	30	30	20	30	10	0	0	0	90	40	30	90	40	50
Austromonesian languages	125	55	65	20	30	10	5	15	5	160	70	70	200	85	80
Dravidian languages	160	90	75	50	25	25	10	5	5	220	130	100	250	130	120
Georgian	0	0	0	0	0	0	0	0	0	0	0	0	0	0	0
Indo-European languages	1,075	540	530	310	155	160	85	30	35	1,450	725	715	2,280	1,155	1,120
Greek	0	0	0	0	0	0	0	0	0	0	0	0	10	0	0
Russian	25	10	15	20	30	10	0	0	0	45	20	25	75	35	30
Balto-Slavic	15	10	10	0	0	0	0	0	0	15	10	10	30	15	15
Germanic languages	20	10	10	20	30	15	15	5	5	40	20	20	80	40	40
Low Saxon-Low Franconian languages	5	5	5	5	5	0	0	0	0	10	5	5	20	10	10
Other	40	20	25	20	30	10	10	5	5	70	35	40	95	50	50
Indo-Iranian languages	710	370	375	85	45	50	5	10	10	730	470	370	890	470	450
Indo-Aryan languages	690	365	370	75	40	40	5	10	10	710	450	360	860	440	390
Bengali	10	5	5	0	0	0	0	0	0	10	5	5	10	5	5
Gujarati	260	155	165	15	30	10	0	0	0	280	165	115	310	180	130
Hindi	55	40	30	20	15	10	0	0	0	85	55	40	90	60	65
Marathi	10	0	5	0	0	0	0	0	0	10	0	5	10	0	5
Nepali	10	5	5	0	0	0	0	0	0	10	5	5	10	5	5
Punjabi (Panjabi)	230	110	130	20	30	10	0	0	0	250	130	140	270	135	140
Urdu	90	45	45	15	5	5	0	0	0	100	50	50	120	65	55
Iranian languages	20	5	10	10	5	5	0	0	0	30	10	10	40	15	20
Indic languages	15	5	5	10	5	5	0	0	0	20	10	10	30	15	15
Dari	0	0	0	0	0	0	0	0	0	0	0	0	5	0	0
Iranian Persian	15	5	5	10	5	5	0	0	0	20	10	10	30	15	15
Italic (Romance) languages	240	110	125	110	55	55	15	5	10	865	170	190	555	265	280
Italian	20	10	10	30	30	15	0	0	0	50	20	30	80	30	30
Portuguese	60	30	25	15	30	5	5	0	0	80	40	40	110	50	40
Romanian	18	5	5	10	5	5	0	0	0	20	10	10	30	10	10
Spanish	150	70	70	60	25	25	10	0	0	200	100	100	210	100	100
Basque	80	35	45	55	25	30	15	10	5	150	70	80	290	90	100
Sign languages	145	70	45	40	25	20	5	0	5	140	65	70	200	110	85
American Sign Language	105	60	40	35	20	20	5	5	0	140	65	60	190	105	70
Sign languages, n.l.c.	15	5	5	5	5	0	0	0	0	20	10	5	20	10	5
Sino-Tibetan languages	180	85	95	110	55	50	10	5	5	300	145	150	470	210	225
Chinese languages	145	65	80	110	55	50	10	5	5	260	125	135	430	205	210
Mandarin	95	40	50	60	25	25	10	0	0	140	70	75	270	120	130
Hak (Cantonese)	40	20	25	45	20	25	5	0	0	90	40	50	140	65	75
Chinese, n.o.s.	5	5	0	0	0	0	0	0	0	5	5	0	5	5	0
Tibeto-Burman languages	35	15	15	0	0	0	0	0	0	35	15	15	35	15	15
Tibetan	35	15	15	0	0	0	0	0	0	35	15	15	35	15	15
Tai-Kadai languages	5	0	0	0	0	0	0	0	0	5	0	5	10	5	5
Thai	5	0	0	0	0	0	0	0	0	5	0	5	10	5	5
Turkic languages	0	0	0	10	30	0	0	0	0	10	30	0	10	10	0
Kazakh	0	0	0	0	0	0	0	0	0	0	0	0	0	0	0
Uzbek	0	0	0	0	0	0	0	0	0	0	0	0	0	0	0
Uralic languages	5	5	0	15	30	0	0	0	0	20	15	0	50	25	20
Estonian	0	0	0	5	5	0	0	0	0	5	5	0	10	10	0

Finnish	0	0	0	0	0	0	0	0	0	0	0	0	0	0	0	10	0	10
Hungarian	5	5	0	10	5	0	0	0	0	15	10	0	0	0	0	20	15	5
Multiple responses	735	335	335	420	280	720	90	75	35	1,215	360	605	1,020	750	285			
English and French	100	30	30	20	75	85	10	10	5	260	135	140	3,380	2,415	2,325			
English and non-official language(s)	595	275	320	245	125	125	85	15	25	885	430	470	5,455	2,345	2,700			
French and non-official language(s)	0	0	0	0	0	0	0	0	0	0	0	0	0	0	10	5	5	
English, French and non-official language(s)	10	5	5	10	5	5	0	0	0	20	10	10	50	25	20			
Multiple non-official languages	20	10	10	10	10	5	0	0	0	30	10	15	100	45	60			
Total - Other language(s) spoken regularly at home for the total population excluding institutional residents - 100% data	54,155	25,300	27,955	45,245	23,085	23,155	11,550	5,605	5,890	132,050	55,090	57,090	229,095	113,075	115,080			
None	51,150	24,850	26,495	44,430	22,210	21,700	11,170	5,495	5,670	126,830	52,535	54,275	223,810	109,230	111,650			
English	840	410	425	435	250	210	90	30	15	1,335	690	685	1,820	905	500			
French	890	565	280	305	240	260	80	10	50	975	440	345	1,605	715	905			
Non-official language	1,180	680	630	700	815	890	285	30	115	2,175	1,080	1,135	3,780	1,770	2,020			
Indigenous	30	10	15	5	0	0	0	0	0	30	10	15	75	20	25			
Non-Indigenous	1,150	615	630	700	815	885	285	30	115	2,145	1,015	1,110	3,725	1,750	1,975			
English and French	15	10	10	10	5	5	5	5	5	30	15	20	4,385	2,270	2,120			
English and non-official language(s)	200	120	75	35	20	20	5	5	0	240	145	95	4,630	2,415	2,220			
French and non-official language(s)	70	30	40	55	20	30	15	5	5	140	55	75	4,995	2,860	2,730			
English, French and non-official language(s)	5	0	0	0	0	0	0	0	0	5	0	0	235	300	50			
Multiple non-official languages	20	10	10	10	5	5	5	5	5	30	15	20	400	215	175			
Total - Knowledge of languages for the population in private households - 25% sample data	53,780	25,130	27,660	45,980	22,670	21,000	11,495	5,650	5,845	131,260	56,755	56,505	227,510	112,375	115,130			
Official languages	53,600	25,055	27,530	45,845	22,600	21,245	11,495	5,650	5,845	130,240	56,605	56,340	226,810	112,070	114,830			
English	53,550	25,040	27,515	45,740	22,585	21,385	11,490	5,645	5,840	130,260	56,535	56,240	226,740	112,000	114,720			
French	1,365	1,525	1,840	4,850	1,585	1,070	755	305	390	8,180	3,875	4,300	14,620	6,700	7,520			
Indo-European languages	25	0	25	0	0	0	0	0	0	25	0	15	80	20	60			
Semitic languages	120	125	85	30	15	50	0	0	0	110	100	135	390	290	240			
Hebrew	15	10	0	10	0	10	0	0	0	20	10	10	55	20	10			
Maltese	15	10	0	20	10	15	0	0	0	35	10	15	35	20	15			
Austro-Asiatic languages	150	70	80	15	0	10	0	0	0	1,05	30	90	190	80	105			
Vietnamese	140	70	75	15	0	10	0	0	0	150	30	85	380	80	100			
Austro-Asiatic languages	425	175	250	125	15	110	70	75	40	920	215	400	915	295	610			
Malays, s.e.a.s.	25	10	20	0	0	0	0	0	0	20	10	10	25	10	10			
Cebuano	25	10	15	0	0	0	0	0	0	20	10	15	40	10	20			
Ilocano	40	15	25	0	0	0	0	0	0	40	15	25	80	15	25			
Tagalog (Philippine)	405	160	245	115	15	100	70	75	40	590	100	385	835	270	570			
Austro-Asiatic languages, n.i.e.	50	25	25	0	0	0	0	0	0	50	25	25	50	25	25			
Creole languages	55	15	30	15	10	10	0	0	0	70	25	40	95	35	55			
Haitian Creole	0	0	0	10	0	0	0	0	0	10	0	0	10	0	0			
Creole, n.e.c.	15	0	10	0	0	0	0	0	0	15	0	10	15	0	10			
Dravidian languages	425	220	280	50	25	25	45	25	15	520	270	240	595	300	270			
Kannada	25	20	10	0	0	0	0	0	0	25	10	10	25	10	10			
Malayalam	315	185	155	0	0	0	0	0	0	315	165	155	315	165	155			
Tamil	115	85	95	50	25	25	45	25	15	210	115	95	255	125	115			
Telugu	50	20	25	0	0	0	0	0	0	50	20	25	205	120	140			
Georgian	0	0	0	0	0	0	0	0	0	0	0	0	80	10	80			
Indo-European languages	1,690	1,675	2,015	2,010	960	1,020	575	270	300	6,275	2,915	2,315	11,855	5,615	6,185			
Armenian	10	0	0	0	0	0	0	0	0	10	0	0	100	0	60			
Balto-Slavic languages	180	185	225	345	160	180	110	55	55	820	380	450	1,730	790	940			

Baltic languages	15	0	15	10	0	0	10	0	10	40	0	25	85	0	30		
Lithuanian	0	0	0	10	0	0	10	0	10	20	0	10	35	0	20		
Lithuanian	10	0	10	0	0	0	0	0	0	10	0	10	20	0	20		
Slavic languages	170	185	200	300	150	175	100	50	55	800	370	400	1,730	790	920		
Belarusian	0	0	0	0	0	0	0	0	0	0	0	0	10	0	10		
Czech	30	15	15	25	10	20	25	10	0	120	60	35	135	85	65		
Maandarian	25	15	10	10	0	10	0	0	0	40	15	20	40	10	20		
Polish	60	25	45	125	75	50	50	25	25	255	125	120	685	275	295		
Russian	140	65	75	80	35	60	25	0	15	345	160	150	685	180	260		
Serbo-Croatian	15	15	10	10	15	15	10	0	0	75	30	15	115	40	45		
Croatian	15	0	15	10	10	10	0	0	0	25	10	25	60	20	25		
Serbian	20	15	0	15	0	0	0	0	0	25	15	0	35	15	0		
Slovak	10	0	10	10	15	10	0	0	0	40	15	20	40	15	20		
Slovene (Slovenian)	30	15	15	10	0	0	0	0	0	40	15	15	40	15	25		
Ukrainian	50	20	30	80	20	35	30	30	0	120	50	65	240	85	100		
Celtic languages	10	0	0	10	0	10	0	0	0	20	0	10	130	60	60		
Irish	0	0	0	0	0	0	0	0	0	0	0	0	10	0	0		
Scottish Gaelic	0	0	0	0	0	0	0	0	0	0	0	0	10	0	0		
Welsh	0	0	0	0	0	0	0	0	0	0	0	0	10	0	0		
Germanic languages	380	225	315	785	350	435	295	135	160	1,660	715	950	3,550	1,790	2,190		
Irish	20	10	10	10	10	10	0	0	0	80	10	10	10	10	10		
High German languages	140	115	145	380	175	210	145	85	90	875	385	485	2,460	1,075	1,245		
German	140	115	140	380	175	205	145	85	90	865	385	475	2,340	1,055	1,220		
Pennsylvania German	0	0	0	0	0	0	0	0	0	0	0	0	10	0	10		
Swiss German	10	0	10	0	0	0	0	0	0	10	0	10	10	0	10		
Low Saxon-Low Franconian languages	300	65	115	395	190	205	135	75	60	730	330	400	1,460	680	765		
Afrikaans	0	0	0	10	10	0	0	0	0	10	10	0	10	10	10		
Dutch	160	65	110	380	180	205	135	70	65	685	315	390	1,380	630	695		
Plattdeutsch	0	0	0	0	0	0	0	0	0	0	0	0	10	10	0		
Vlaems (Flemish)	0	0	0	0	0	0	0	0	0	0	0	0	10	10	0		
Scandinavian languages	40	0	40	10	10	10	10	10	0	85	10	70	145	25	130		
Danish	25	0	25	10	10	10	10	0	0	55	10	45	75	10	65		
Norwegian	10	0	10	0	0	0	0	0	0	30	0	10	30	0	30		
Swedish	0	0	0	0	0	0	0	0	0	0	0	0	15	0	0		
Greek	160	80	110	85	70	80	80	30	30	300	140	140	410	170	240		
Indo-Iranian languages	1,660	790	795	295	120	110	20	10	10	1,715	840	815	2,685	1,080	1,095		
Indo-Aryan languages	1,420	710	750	180	100	90	20	10	10	1,430	820	810	1,870	900	930		
Bengali	30	20	15	0	0	0	0	0	0	30	20	15	30	10	25		
Gujarati	45	20	20	5	10	10	0	0	0	140	80	25	60	30	285		
Hindi	850	480	570	130	50	60	0	0	0	960	510	450	595	530	465		
Kannada	10	0	0	0	0	0	0	0	0	10	0	0	10	0	0		
Marathi	25	15	10	0	0	0	0	0	0	25	15	10	35	15	30		
Nepali	15	0	10	0	0	0	0	0	0	15	0	10	15	0	30		
Punjabi (Panjabi)	535	225	315	80	25	15	0	0	0	575	250	330					

Persian (Farsi), n.o.s.	0	0	0	0	0	0	0	0	0	0	0	0	15	30	0
Indo-Iranian languages, n.i.e.	40	15	25	55	80	25	0	0	0	95	65	50	220	305	130
Italic (Romance) languages	1,130	490	640	630	345	285	150	75	75	1,910	910	1,000	3,940	5,945	1,975
Italian	250	120	135	180	115	70	40	25	20	480	260	225	940	520	420
Portuguese	205	105	100	70	40	25	25	10	15	300	155	140	620	280	250
Romanian	40	10	25	30	30	0	0	0	0	50	20	25	120	65	50
Spanish	740	365	435	385	200	190	90	45	40	1,215	550	605	2,370	1,130	1,230
Italic (Romance) languages, n.i.e.	0	0	0	10	10	0	0	0	0	10	10	0	30	20	0
Japanese	30	25	0	45	15	30	15	15	0	90	55	30	100	55	40
Korean	180	65	65	100	50	50	15	10	0	265	125	115	275	135	125
Niger-Congo languages	25	10	15	40	25	10	0	0	0	65	35	25	85	35	35
Swahili	10	0	10	0	0	0	0	0	0	10	0	10	40	0	20
Yoruba	0	0	10	0	0	0	0	0	0	0	0	10	0	0	10
Niger-Congo languages, n.i.e.	0	0	0	15	10	10	0	0	0	15	10	10	15	10	10
African, n.o.s.	0	0	0	0	0	0	0	0	0	0	0	0	15	0	10
Sign languages	410	150	260	100	80	80	15	0	10	565	230	350	805	265	495
American Sign Language	250	120	225	190	80	80	15	0	10	525	200	315	700	220	450
Quebec Sign Language	0	0	0	0	0	0	0	0	0	0	0	0	10	0	0
Sign languages, n.i.e.	65	30	35	15	15	0	0	0	0	80	45	35	90	55	35
Sino-Tibetan languages	365	140	230	230	90	140	80	40	40	675	270	410	1,015	410	605
Chinese languages	230	125	200	220	80	140	80	40	40	630	245	380	970	385	575
Mandarin	230	85	145	90	35	55	65	30	30	385	150	230	615	240	370
Min Nan (Chaochow, Teochow, Fukien, Taiwanese)	0	0	0	0	0	0	0	0	0	0	0	0	15	0	10
Yue (Cantonese)	150	60	90	150	55	95	25	15	20	325	130	205	405	205	270
Tibeto-Burman languages	45	15	25	0	0	0	0	0	0	45	15	25	45	15	25
Tibetan	45	15	25	0	0	0	0	0	0	45	15	25	45	15	25
Tai-Kadai languages	10	10	0	0	0	0	0	0	0	10	10	0	10	10	0
Thai	10	10	0	0	0	0	0	0	0	10	10	0	10	10	0
Turkic languages	30	10	15	20	10	10	0	0	0	50	20	25	90	35	35
Kazakh	0	0	0	0	0	0	0	0	0	0	0	0	20	15	0
Turkish	30	10	15	20	10	10	0	0	0	50	20	25	90	35	35
Uzbek	0	0	0	0	0	0	0	0	0	0	0	0	20	15	0
Uralic languages	100	35	60	75	40	35	25	15	15	210	90	110	510	180	265
Estonian	10	0	10	0	0	0	10	10	0	20	10	10	35	20	25
Finnish	50	20	25	15	10	10	10	0	10	75	30	45	115	30	75
Hungarian	40	20	25	40	15	25	15	10	0	95	45	50	280	100	135

APPENDIX G: Guide to Basic Employer Costs in Ontario

Basic Costs for Ontario's Employers

Fringe Benefits	Mandatory Paid by Employer	Common Practice (of Employers)
Canadian Pension Plans to a maximum premium of Cdn \$3,166.45/year (2021)	5.45%	5.45%
Employment Insurance Commission to a maximum premium of Cdn \$1,245.36 / year unless a reduced premium rate applies	1.58%	1.58%
Workplace Safety & Insurance Board Varies (depends on industry and # of employees) Rate shown for Food, Textiles and Related Manufacturing (Manufacturing rates range from \$0.28-\$2.15)	1.41%	1.41%
Employers Health Tax (EHT) Applied to eligible payroll over Cdn \$400,000	1.95%	1.95%
Vacation	(2 weeks) 4.00%	(3 weeks) 6.00%
Paid Public Holidays	(9 days) 3.69%	(11 days) 4.40%
Pension Contribution	N/A	5-6%
Group Insurance Life, Health, Sickness, Dental, Vision, Physical/Mental Fitness	N/A	4-7%
Total	16.13%	29.79-34.79%

APPENDIX H: Service Canada's Wage and Occupation Data

Service Canada Occupational Wage Data Employment Region 3515 – (Kingston-Quinte-Pembroke)

As of 2021 – 2022 Reference Period

Source: Service Canada

*Due to Employment Region (ER) 3515 data limitations, wages for this occupation cannot be published. Referred to access/use the wage published for this occupation at the provincial level.

Job Type	NOC	Category	Average Wage	High Wage	Low Wage	Reference period
			(\$ / hour)	(\$ / hour)	(\$ / hour)	
Management	111	Financial Manager	\$57.69	\$81.73	\$36.63	2021-2022
	112	Human Resources Managers	\$55.29	\$80.51	\$37.50	2021-2022
	114	Other Administrative Services Managers	\$47.12	\$83.07	\$28.50	2021-2022
	211	Engineering Managers	\$61.54	\$87.18	\$39.34	2021-2022
	711	Construction Managers	\$46.00	\$72.12	\$26.44	2021-2022
	911	Manufacturing Managers	\$40.38	\$50.48	\$16.55	2021-2022
Engineering	2131	Civil Engineers	\$49.52	\$77.47	\$24.04	2021-2022
	2132	Mechanical Engineers	\$43.27	\$64.28	\$25.00	*Prov 2021-2022
	2133	Electrical and Electronics Engineers	\$31.25	\$72.31	\$31.73	2021-2022
	2141	Industrial and Manufacturing Engineers	\$31.25	\$48.08	\$20.00	2021-2022
	2173	Software Engineers	\$51.44	\$81.73	\$32.05	2021-2022
	2231	Civil Engineering Technologists and Technicians	\$33.00	\$49.74	\$22.22	2021-2022
	2232	Mechanical Engineering Technologists and Technicians	\$32.05	\$49.23	\$19.00	2021-2022
	2233	Industrial Engineering and Manufacturing Technologists and Technicians	\$31.25	\$48.08	\$20.00	2021-2022
	2241	Electrical and Electronics Engineering Technologists and Technicians	\$34.00	\$50.77	\$18.46	2021-2022
	2242	Electronic Service Technicians (Household and Business Equipment)	\$22.40	\$25.48	\$20.00	2021-2022
Trades, Equipment and Equipment Operators	2253	Drafting Technologists and Technicians	\$29.23	\$40.00	\$19.00	2021-2022
	7231	Machinists and Machining and Tooling Inspectors	\$28.85	\$36.18	\$19.60	2021-2022
	7241	Electricians (Except Industrial and Power System)	\$40.00	\$54.00	\$28.21	2021-2022
	7242	Industrial Electricians	\$38.75	\$47.00	\$28.00	2021-2022
	7246	Telecommunications Installation and Repair Workers	\$40.00	\$54.00	\$28.21	2021-2022
	7233	Sheet Metal Workers	\$36.00	\$50.00	\$21.00	2021-2022
	7236	Ironworkers	\$29.09	\$48.00	\$29.09	2021-2022
	7237	Welders and Related Machine Operators	\$22.80	\$27.00	\$19.50	2021-2022
Process, Manufacturing & Utilities	7311	Construction Millwrights and Industrial Mechanics (Except Textile)	\$32.00	\$40.00	\$26.00	2021-2022
	7312	Heavy-Duty Equipment Mechanics	\$33.00	\$34.00	\$23.00	2021-2022
	9411	Machine Operators, Mineral and Metal Processing	\$26.00	\$35.62	\$20.00	2021-2022
	9523	Electronics Assemblers, Fabricators, Inspectors and Testers	\$26.00	\$48.08	\$20.00	*Prov 2021-2022
	9418	Other Metal Products Machine Operators	\$21.00	\$30.00	\$21.00	2021-2022
	9611	Labourers in Mineral and Metal Processing	\$22.50	\$32.76	\$17.00	*Prov 2021-2022
	9612	Labourers in Metal Fabrication	\$20.87	\$28.23	\$16.55	*Prov 2021-2022
	9619	Other Labourers in Processing, Manufacturing and Utilities	\$18.00	\$22.74	\$16.55	2021-2022

APPENDIX I: 2021 Statistics Canada Demographic Data

2021 Statistics Canada Demographic Data - Household and Dwelling Characteristics

Characteristics	City of Belleville			City of Quinte West			Municipality of Brighton			Quinte Region*			Greater Quinte Region **			
	Total	Men	Women	Total	Men	Women	Total	Men	Women	Total	Men	Women	Total	Men	Women	
Total - Occupied private dwellings by structural type of dwelling - 100% data	23,535			19,055			5,015			47,605			98,930			
Single-detached house	13,980			14,505			4,415			32,900			77,520			
Semi-detached house	705			855			95			1,655			2,635			
Row house	1,800			425			105			2,330			3,295			
Apartment or flat in a duplex	675			315			90			1,080			1,550			
Apartment in a building that has fewer than five storeys	4,135			2,025			215			6,375			30,055			
Apartment in a building that has five or more storeys	2,125			510			25			2,660			2,685			
Other single-attached house	110			50			10			170			310			
Movable dwelling	10			375			50			435			835			
Total - Private households by household size - 100% data	23,535			19,055			5,015			47,605			98,930			
1 person	7,335			4,730			1,220			13,285			26,360			
2 persons	8,805			7,620			2,385			18,810			40,890			
3 persons	3,220			2,980			600			6,800			13,755			
4 persons	2,560			2,315			510			5,385			11,040			
5 or more persons	1,615			1,415			300			3,330			6,900			
Number of persons in private households																
	Total	Men	Women	Total	Men	Women	Total	Men	Women	Total	Men	Women	Total	Men	Women	
Average household size	2.3	26,130	27,665	2.4	45,980	22,910	23,070	2.3	5,650	5,845	111,275	54,690	56,580	152,530	114,645	117,260

*Quinte Region includes the communities of the City of Belleville, City of Quinte West and the Municipality of Brighton

**Greater Quinte Region includes the communities of the City of Belleville, City of Quinte West, Municipality of Brighton, Hamilton Township, Grenville Township, Alton/Haldimand Township, Twp. of Quinte West, Stirling-Rawdon Township, Municipality of Centre Hastings, Town of Deseronto, Municipality of Trent, Town of Bancroft, Carleton Place Township, Frontenac Township, Municipality of Hastings Highlands, Limerick Township, Madoc Township, Municipality of Alexandria and Lake, Tudor and Central Township, Wellston Township, Town of Greater Napanee, City of Prince Edward County.

Source: Statistics Canada

Community	2023 Average Sale Price of Residential Dwellings
City of Belleville	*505,327
City of Quinte West	**560,776
Municipality of Brighton	***\$668,454

Source: Quinte & District Association of Realtors

*This figure reflects the amalgamated City of Belleville which includes Thurlow Ward and Belleville Ward

**This figure reflects sales prices for the Municipality of Quinte West, which includes Trenton, Sidney, Murray and Frankford Wards

***This figure reflects sales prices for Brighton Township only (including the Town of Brighton). Murray Ward figures are reflected in Quinte West stats

APPENDIX J: 2021 Statistics Canada Demographic Data (Population and Dwelling Counts)

Characteristics	City of Belleville	City of Quinte West	Municipality of Brighton	Quinte Region*	Greater Quinte Region **
Population in 2021	55,071	46,560	12,108	113,739.00	236,804.00
Population in 2016	50,716	43,577	11,844	106,137.00	223,387.00
2016 to 2021 population change (%)	8.6%	6.8%	2.2%	7.2%	6.0%
Total private dwellings 2021	24,582	19,888	5,392	49,862.00	111,595.00
Total private dwellings 2016	22,744	18,646	5,099	46,489.00	106,616.00
Total private dwellings change (%)	8.1%	6.7%	5.7%	7.3%	4.7%
Private dwellings occupied by usual residents 2021	23,536	19,056	5,014	47,606.00	98,934.00
Private dwellings occupied by usual residents 2016	21,732	17,828	4,777	44,337.00	93,093.00
Private dwellings occupied by usual residents change (%)	8.3%	6.9%	5%	7.4%	6.3%
Land area in square kilometres 2021	274.15	495.45	223.24	992.84	9,076.84
Population density per square kilometre	222.8	94	54.2	114.56	26.09
National population rank, 2021	99	114	356		
Province/Territory population rank, 2021	41	48	129		

*Quinte Region includes the communities of the City of Belleville, City of Quinte West and the Municipality of Brighton

**Greater Quinte Region includes the communities of the City of Belleville, City of Quinte West, Municipality of Brighton, Hamilton Township, Cramate Township, Ainswick/Holdimand Township, Tyendinago Township, Stirling Rawdon Township, Municipality of Centre Hastings, Town of Deseronto, Municipality of Tweed, Town of Bancroft, Carlow/Mayo Township, Faraday Township, Municipality of Hastings Highlands, Limerick Township, Madoc Township, Municipality of Marmara and Lake, Tudor and Cashel Township, Wallaston Township, Town of Greater Napanee, City of Prince Edward County.

Source: Statistics Canada

APPENDIX K: Climate Data Comparison for the Bay Of Quinte

Location	Jan - 2000		Apr - 2000		Jul - 2000		Oct -2000	
	°C	°F	°C	°F	°C	°F	°C	°F
QUINTE	-7.5	18.5	6.1	42.9	20.5	68.9	8.3	46.9
Ottawa	-10.5	13.0	6.0	42.8	21.0	69.8	8.2	46.7
Chicago	-4.0	24.8	8.5	47.3	23.0	73.4	12.0	53.6
Minneapolis	-10.0	14.0	7.5	45.5	22.5	72.5	10.0	50.0
New York	-0.1	32.1	10.0	50.0	23.5	74.3	15.0	59.0
London	4.0	39.2	9.5	49.1	18.9	66.0	11.0	51.8
Paris	3.5	38.3	11.0	51.8	20.0	68.0	12.0	53.6
Frankfurt	0.5	32.9	11.0	51.8	20.0	68.0	10.5	50.9
Tokyo	3.0	37.4	12.5	54.5	24.5	76.1	17.0	62.6

APPENDIX L: SAMPLE UTILITY RATE DATA FOR THE BAY OF QUINTE

Ellexicon Energy Rates - General Service 50 to 2,999 kW

City of Belleville electricity provider - Complete Rate Details at Ellexicon/Veridian Website

Customer Charge: \$124.99 (monthly)

Delivery Charge: \$5.6786 per kW and \$0.0012 per kWh

Transformer Allowance: 60¢/kW

Electricity - Tiered Regulated Price Plan - Effective February 08, 2022

9¢ /kWh for the first 750 kWh used per month

11.5¢ /kWh for the remaining 750 kWh used per month

Global Adjustment * (see below)

Transmission Connection Charge: \$2.4132/kW

Transmission Network Charge: \$3.6527/kW

Debt Retirement Charge: The Debt Retirement Charge (DRC) ended for all electricity users on March 31, 2018. No user should be charged the DRC on electricity consumed beginning April 1, 2018.

Wholesale Market Services: 0.39¢/kWh

The Rural or Remote Electricity Rate Protection (RRRP) Charge

Funds the RRRP Program, which provides rate protection to consumers located in rural or remote areas, where the cost of distributing electricity is higher.

- Wholesale Market Service Charge: 0.34¢/kWh

- Rural or Remote Electricity Rate Protection (RRRP) Charge: 0.05¢/kWh

Ellexicon Energy Rates - General Service 3,000 to 4,999 kW

City of Belleville electricity provider - Complete Rate Details at Ellexicon/Veridian Website

Customer Charge: \$6,56781 (monthly)

Delivery Charge: \$3.89421 per kW and \$0.0012/kWh

Transformer Allowance: 60¢/kW

Low Voltage Service Rate: \$0.436/kW

Electricity - Tiered Regulated Price Plan - Effective February 08, 2022

9.8¢/kWh for the first 750 kWh used per month

11.5¢/kWh for the remaining 750 kWh used per month

Global Adjustment* (see below)

Transmission Connection Charge: \$2.6503/kW

Transmission Network Charge: \$4.0244/kW

Debt Retirement Charge: The Debt Retirement Charge (DRC) ended for all electricity users on March 31, 2018. No user should be charged the DRC on electricity consumed beginning April 1, 2018.

Wholesale Market Services: 0.34¢/kWh

The Rural or Remote Electricity Rate Protection (RRRP) Charge

Funds the RRRP Program, which provides rate protection to consumers located in rural or remote areas, where the cost of distributing electricity is higher.

- Wholesale Market Service Charge: 0.34¢/kWh

- Rural or Remote Electricity Rate Protection (RRRP) Charge: 0.05¢/kWh

*Global Adjustment

Ontario is deferring a portion of Global Adjustment (GA) charges for industrial and commercial electricity consumers that do not participate in the Regulated Price Plan (RPP), starting from April 2020. The GA rate for smaller industrial and commercial consumers (i.e., Class B) has been set at \$115 per megawatt-hour, which is roughly in line with the March 2020 value. Large industrial and commercial consumers (i.e., Class A) will receive the same percentage reduction in GA charges as Class B consumers.

City of Belleville – Water and Wastewater Rates - 2024

Monthly/Bimonthly Water Consumption is calculated using the following rates per cubic meter (m3).

First 455 cubic meters \$1.99/m3
Next 22,275 cubic meters \$1.52/m3
Over 22,730 cubic meter \$0.91/m3

Residential Sewer surcharge is 87.6% applied to the water consumption and service charges.

General Service Sewer surcharge is 87.6% applied to water consumption and service charges on the first 22,730 cubic meters and 60% after 22,730 cubic meters.

City of Quinte West Service Ares (Residential/Commercial) Water and Wastewater Rates - 2023 and 2024

	2023 Fee	2024 Fee
Water (per cubic metre)	\$1.34	\$1.37
Sewer / Wastewater (per cubic metre)	\$2.10	\$2.20
Water (per 100 cubic feet)	\$3.79	\$3.88
Sewer / Wastewater (per 100 cubic feet)	\$5.66	\$6.23
Water Monthly Base Charge (Based on a 5/8" and 3/4" meter)	\$25	\$25
Sewer / Wastewater Monthly Base Charge (Based on a 5/8" and 3/4" meter)	\$38	\$39

City of Quinte West (Trenton) and Municipality of Brighton Electricity Provider – Hydro One

Commercial (Demand) – Delivery Charges Effective Date: January 1, 2022

General Service Demand Billed (50 kW and above)	Urban Demand	Demand
Monthly Service Charge ¹ (\$/month)	\$108.70	\$118.01
Distribution Volume Charge ¹ (billed demand – \$/kW)	\$11.5856	\$20.1172
Transmission Connection Charge ² (billed demand – \$/kW)	\$2.1682	\$1.6886
Transmission Network Charge ² (billed demand – \$/kW)	\$3.1157	\$2.4058
Line loss adjustment factor ³	1.050	1.061

Commercial (Demand) – Regulatory Charges Effective Date: January 1, 2022

General Service Demand Billed (50 kW and above)	Urban Demand	Demand
Standard supply service administration charge ⁴ (\$/month)	\$0.25	\$0.25
Rural rate protection charge (adjusted usage – ¢/kWh)	0.05¢	0.05¢
Wholesale market service rate (includes capacity-based recovery) (adjusted usage – ¢/kWh)	0.34¢	0.34¢

¹Cost adjustment to recover past tax amounts has been included in the delivery rates shown above. This adjustment is effective until June 30, 2023. To see the full schedule of rates and charges, please click [here](#).

²Retail transmission rates shown have not been adjusted for line losses.

³Electricity charges are subject to a cost adjustment for line losses. Customers who use less than 150,000 kWh of electricity a year will have this cost adjustment included in their Delivery charge. Customers paying the spot market price or who have signed a contract with an electricity retailer will have this cost adjustment included in their Electricity charge.

⁴If you've enrolled with a retailer, the \$0.25 standard supply service administration charge will be deducted from the Regulatory Charges on your bill.

Commercial (Energy) – Delivery Charges Effective Date: January 1, 2022

General Service Energy Billed (less than 50 kW)	Urban Energy	Energy
Monthly Service Charge ¹ (\$/month)	\$27.76	\$35.24
Smart Metering Entity Charge ² (\$/month)	\$0.57	\$0.57
Distribution volume charge ¹ (metered use – ¢/kWh)	3.34¢	7.02¢
Transmission Connection Charge (adjusted use – ¢/kWh)	0.60¢	0.59¢
Transmission Network Charge (adjusted use – ¢/kWh)	0.87¢	0.81¢
Line loss adjustment factor ³	1.067	1.096

Commercial (Energy) – Regulatory Charges Effective Date: January 1, 2022

General Service Energy Billed (less than 50 kW)	Urban Energy	Energy
Standard supply service administration charge ⁴ (\$/month)	\$0.25	\$0.25
Rural rate protection charge (adjusted usage – ¢/kWh)	0.05¢	0.05¢
Wholesale market service rate (includes capacity-based recovery) (adjusted usage – ¢/kWh)	0.34¢	0.34¢

¹Cost adjustment to recover past tax amounts has been included in the delivery rates shown above. This adjustment is effective until June 30, 2023. To see the full schedule of rates and charges, please click [here](#).

²As directed by the OED, the smart meter entity charge will be collected from residential and general service energy-billed customers on behalf of the IESO until December 31, 2022.

³Electricity charges are subject to a cost adjustment for line losses. Customers who use less than 150,000 kWh of electricity a year will have this cost adjustment included in their Delivery charge. Customers paying the spot market price or who have signed a contract with an electricity retailer will have this cost adjustment included in their Electricity charge.

⁴If you've enrolled with a retailer, the \$0.25 standard supply service administration charge will be deducted from the Regulatory Charges on your bill.

**Municipality of Brighton –
2023 Water and Wastewater Rates**
Source: Municipality of Brighton

Item	Service Type	Water Use Base Rate per month	Water Use Metered Rate per cubic meter	Sewage Use Base Rate per month	Sewage Use Metered Rate per cubic meter
A	Individual Residential Unit	\$23.37/unit	\$1.75/m ³	\$18.43/unit	\$1.81/m ³
B	Multiple Residential Unit	\$23.37/unit	\$1.75/m ³	\$18.43/unit	\$1.81/m ³
C	Multiple Mixed Uses (Building Containing Individual Residential Units and Individual Non-residential Units)	\$23.37/unit	\$1.75/m ³	\$18.43/unit	\$1.81/m ³
D	Individual Non-residential Buildings (based on meter size)	\$23.37/unit	\$1.75/m ³	\$18.43/unit	\$1.81/m ³
(i)	5/8-inch diameter	\$23.37/unit	\$1.75/m ³	\$18.43/unit	\$1.81/m ³
(ii)	1-inch diameter	\$35.06/unit	\$1.75/m ³	\$27.65/unit	\$1.81/m ³
(iii)	1 1/2-inch diameter	\$46.78/unit	\$1.75/m ³	\$36.89/unit	\$1.81/m ³
(iv)	2-inch diameter	\$70.14/unit	\$1.75/m ³	\$55.31/unit	\$1.81/m ³
(v)	3-inch diameter	\$93.48/unit	\$1.75/m ³	\$73.71/unit	\$1.81/m ³
(vi)	4-inch diameter	\$140.28/unit	\$1.75/m ³	\$110.62/unit	\$1.81/m ³
E	Presqu'île Park Rates	By meter size	\$3.56/ m ³	By meter size	\$4.05/ m ³
F	Bulk Water (commercial accounts)	\$17.20 per month	\$2.79/m ³	N/A	N/A

Note: A special development charge or surcharge will apply for new customers on water and sewer lines extended after January 1, 2001, to areas beyond the former town boundary.

Enbridge Gas Rates–City of Belleville, City of Quinte West (Trenton), Municipality of Brighton

LARGE VOLUME GENERAL FIRM SERVICE RATES (Uses over 50,000 m ³ per year)	
Rates Description	PRICE PER M ³
Delivery Charges:	
First 1,000 m ³ per month @	9.1971¢ /m ³
Next 9,000 m ³ per month @	7.5040¢ /m ³
Next 20,000 m ³ per month @	6.5390¢ /m ³
Next 70,000 m ³ per month @	5.9215¢ /m ³
Over 100,000 m ³ per month @	3.58173¢ /m ³
Delivery-Price Adjustment (All Volumes)	-
Monthly Customer Charge	\$74.92
Carbon Charges:	
Federal Carbon Charge (if applicable)	9.7900¢ /m ³
Facility Carbon Charge (in addition to Delivery Charge)	0.0141¢ /m ³

Source: www.enbridgegas.com – April 1 2022

APPENDIX M: Sample Municipal Tax Rate Data

Region	Industrial Occupied	Large Industrial	New Construction Industrial
BELLEVILLE -2023			
Belleville Urban	0.04716990	-	
<u>Cannifton Urban</u>	0.04540689	-	
<u>Cannifton Rural</u>	0.04208363	-	
Thurlow Rural	0.03639117	-	
QUINTE WEST-2023			
Levy Ward 1	0.04176698	0.04404070	0.04176698
Levy Ward 2	0.03810564	0.04012684	0.03810564
Levy Ward 3	0.03810564	0.04012684	0.03810564
Levy Ward 4	0.03835691	0.04039544	0.03835691
BRIGHTON -2023			
	0.03432469	-	

**APPENDIX N: Loyalist College: Food Processing Operator
Apprenticeship Training Program Modules**



BAY OF QUINTE
ECONOMIC DEVELOPMENT

OUR EXPERIENCED TEAM HAS
SUPPORTED COMPANIES LIKE;
PROCTER & GAMBLE,
WK KELLOGG CO & OTHERS
LOCATE OR PROSPER IN THE
BAY OF QUINTE

**REACH OUT FOR MORE
INFORMATION**



RACHAEL LAMB
Administrative Assistant
rachael@quintedevelopment.com



VICKI BRISTOW FERGUSON
Business Development Officer
vicki@quintedevelopment.com



CHRIS KING
Chief Executive Officer
chris@quintedevelopment.com



MIKE HEWITT
Manufacturing Resource Centre Coordinator
mike@quintedevelopment.com

613-961-7990
quintedevelopment.com